



## Rural Sturgeon County Alberta

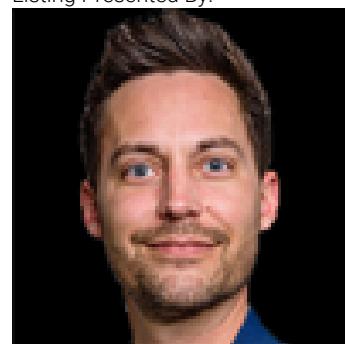
\$1,399,900

FORMER BROOKHAVEN SHOWHOME on 1.55 acres located ACROSS FROM SANDPIPER GOLF COURSE & under 5 MINUTES WEST OF ST. ALBERT! Unique 4-level split dream home ft. Fully custom Gem Cabinets kitchen, dark wood beams & stone pillars on the main level, floor-to-ceiling windows to enjoy your tree-line views, curved wood open tread stair case leading to your huge bonus room and screened-in upper patio by Suncoast Enclosures. Upstairs you'll find 3 bedrooms & 2 full bathrooms including a spacious primary retreat looking out onto the trees. The basement is fully-finished w/ a 4th bedroom, projector TV area & large storage room. Your vehicles will stay cozy all winter long in your fully finished & heated triple attached garage. Outside, you can bring your acreage dreams to life with lots of space to build a secondary shop. And yes, you have FIBRE INTERNET! Enjoy the amenities of city living paired with the serenity + green space of rural life. Welcome home! (id:6769)

Bedroom 4 4.7 m X 3.61 m  
Recreation room 4.81 m X 6.23 m  
Living room 4.55 m X 6.29 m  
Dining room 2.85 m X 3.73 m  
Kitchen 3.21 m X 3.73 m  
Laundry room 2.47 m X 2.48 m

Family room 5.8 m X 3.95 m  
Den 4.05 m X 3.94 m  
Primary Bedroom 4.75 m X 3.65 m  
Bedroom 2 3.5 m X 3.18 m  
Bedroom 3 3.93 m X 4.33 m

Listing Presented By:



Originally Listed by:  
RE/MAX Professionals



**RE/MAX Elite Sherwood Park**

#116, 150 Chippewa Rd ,  
Edmonton, Alberta,

Phone: 780-984-9399  
Fax:  
steveleddy@hotmail.com

The property information on this website is derived from the Canadian Real Estate Association's Data Distribution Facility (DDF®). DDF® references real estate listings held by various brokerage firms and franchisees. The accuracy of information is not guaranteed and should be independently verified. The trademarks REALTOR®, REALTORS® and the REALTOR® logo are controlled by The Canadian Real Estate Association (CREA) and identify real estate professionals who are members of CREA. The trademarks MLS®, Multiple Listing Service® and the associated logos are owned by CREA and identify the quality of services provided by real estate professionals who are members of CREA.