



Edmonton Alberta

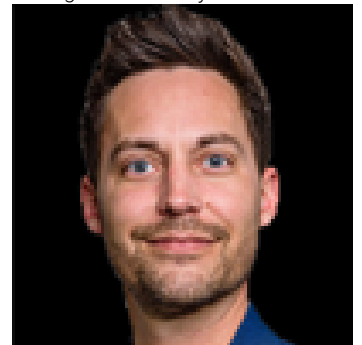
\$514,500

DETACHED DOUBLE GARAGE* *FULLY FINISHED BASEMENT WITH SIDE ENTRY* TWO KITCHEN ** PRIME LAUREL LOCATION Welcome to this well-maintained 2-storey detached home in the sought-after community of Laurel. Built in 2015, this property offers a functional layout with a bright main floor featuring a spacious living area, dining space, and kitchen with ample storage. Upstairs includes a comfortable primary bedroom with ensuite, two additional bedrooms, and convenient upper-level laundry. The fully finished basement adds extra living space with a bedroom, rec room, and full bath. Situated on a south-facing rectangular lot with a double detached garage, and close to schools, shopping, parks, and transit--this home is perfect for families or investors alike. (id:6769)

Bedroom 4 Measurements not available
Recreation room Measurements not available
Utility room Measurements not available
Storage Measurements not available
Living room Measurements not available
Dining room Measurements not available

Kitchen Measurements not available
Mud room Measurements not available
Primary Bedroom Measurements not available
Bedroom 2 Measurements not available
Bedroom 3 Measurements not available
Laundry room Measurements not available

Listing Presented By:



Originally Listed by:
Nationwide Realty Corp



RE/MAX Elite Sherwood Park

#116, 150 Chippewa Rd ,
Edmonton, Alberta,

Phone: 780-984-9399
Fax:
steveleddy@hotmail.com

The property information on this website is derived from the Canadian Real Estate Association's Data Distribution Facility (DDF®). DDF® references real estate listings held by various brokerage firms and franchisees. The accuracy of information is not guaranteed and should be independently verified. The trademarks REALTOR®, REALTORS® and the REALTOR® logo are controlled by The Canadian Real Estate Association (CREA) and identify real estate professionals who are members of CREA. The trademarks MLS®, Multiple Listing Service® and the associated logos are owned by CREA and identify the quality of services provided by real estate professionals who are members of CREA.