



Edmonton Alberta

\$489,900

Welcome to this beautiful home in the lovely community of Mattson, Under Construction by the well-known Rohit Builders! Offering 3 bedrooms and 2 1/2 baths, this home features 9 ft ceilings on the main floor and a stylish designer kitchen with upgraded cabinetry, quartz countertops, and a convenient 2-piece powder room. The upper level includes 3 bedrooms, a spacious primary suite with a 5-piece ensuite and walk-in closet, as well as a laundry room for added convenience. The full unfinished basement with a separate entrance offers your plans for finishing to your requirements. Complete with full landscaping and a double garage. Completion in Summer! (id:6769)

Living room Measurements not available

Dining room Measurements not available

Kitchen Measurements not available

Pantry Measurements not available

Family room Measurements not available

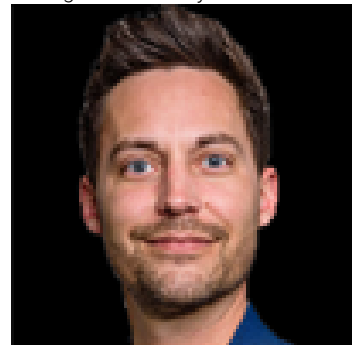
Primary Bedroom Measurements not available

Bedroom 2 Measurements not available

Bedroom 3 Measurements not available

Laundry room Measurements not available

Listing Presented By:



Originally Listed by:
Century 21 Smart Realty

RE/MAX ELITE

RE/MAX Elite Sherwood Park

#116, 150 Chippewa Rd ,
Edmonton, Alberta,

Phone: 780-984-9399

Fax:

steveleddy@hotmail.com

The property information on this website is derived from the Canadian Real Estate Association's Data Distribution Facility (DDF®). DDF® references real estate listings held by various brokerage firms and franchisees. The accuracy of information is not guaranteed and should be independently verified. The trademarks REALTOR®, REALTORS® and the REALTOR® logo are controlled by The Canadian Real Estate Association (CREA) and identify real estate professionals who are members of CREA. The trademarks MLS®, Multiple Listing Service® and the associated logos are owned by CREA and identify the quality of services provided by real estate professionals who are members of CREA.