



Edmonton Alberta

\$429,900

Welcome to this beautifully maintained corner unit home with no condo fees in the sought-after community of Maple Crest. This property offers numerous upgrades including central air conditioning, an electric fireplace, a gas stove, a gas line for BBQ on the deck, and an insulated double detached garage. The main floor boasts a bright and spacious living area, a dining space perfect for family gatherings, and a functional U-shaped kitchen with ample cabinetry and storage. Upstairs, you'll find three generously sized bedrooms and two full bathrooms, providing comfort and convenience for the whole family. This move-in ready home comes complete with all appliances, a fully landscaped yard, deck, fencing, and double detached garage. Located close to shopping, restaurants, movie theatres, coffee shops, schools, playgrounds, and plazas, this home offers the perfect blend of comfort and convenience, 1 minute to bus stop (id:6769)

Living room Measurements not available

Dining room Measurements not available

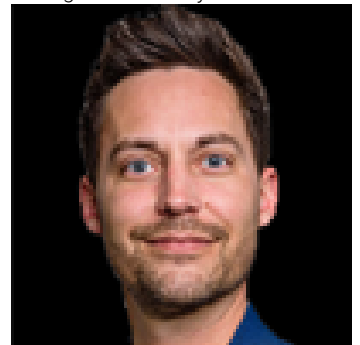
Kitchen Measurements not available

Primary Bedroom Measurements not available

Bedroom 2 Measurements not available

Bedroom 3 Measurements not available

Listing Presented By:



Originally Listed by:
Initia Real Estate



RE/MAX Elite Sherwood Park

#116, 150 Chippewa Rd ,
Edmonton, Alberta,

Phone: 780-984-9399

Fax:

steveleddy@hotmail.com

The property information on this website is derived from the Canadian Real Estate Association's Data Distribution Facility (DDF®). DDF® references real estate listings held by various brokerage firms and franchisees. The accuracy of information is not guaranteed and should be independently verified. The trademarks REALTOR®, REALTORS® and the REALTOR® logo are controlled by The Canadian Real Estate Association (CREA) and identify real estate professionals who are members of CREA. The trademarks MLS®, Multiple Listing Service® and the associated logos are owned by CREA and identify the quality of services provided by real estate professionals who are members of CREA.