



Sherwood Park Alberta

\$780,000

Why build when this stunning turnkey 2-storey checks every box and then some? Built in 2024 and move-in ready, this is the home growing families dream about. The open-concept main floor is bright and welcoming, featuring a gourmet kitchen with granite countertops, high-end stainless steel appliances and a walk-through pantry. Motorized blinds, a cozy fireplace and a separate side entrance complete the picture. Upstairs, a bonus room with wall-to-wall windows gives everyone their own space to unwind. The primary suite is a true retreat with tray ceilings, LED lighting, a walk-in closet and a spa-like 5-piece ensuite with a jetted tub. A Jack and Jill bath serves the other two bedrooms, and upper floor laundry makes life that much easier. The fully finished basement delivers 2 more bedrooms, a 3-piece bath and a gym. Double attached garage, fully fenced yard backing onto green space and an enclosed dog park steps away. This family home has it all. (id:6769)

Bedroom 4 3.35 m X 2.93 m

Living room 5.59 m X 4.08 m

Dining room 2.46 m X 3.94 m

Kitchen 3.7 m X 3.53 m

Den 2.97 m X 2.72 m

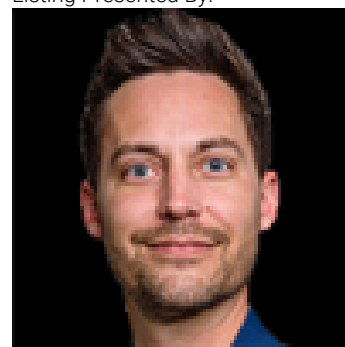
Family room 3.86 m X 5.78 m

Primary Bedroom 4.5 m X 3.82 m

Bedroom 2 3.1 m X 3.67 m

Bedroom 3 3.36 m X 3.68 m

Listing Presented By:



Originally Listed by:
RE/MAX Elite

<https://erickyip.com/>

RE/MAX ELITE

RE/MAX Elite Sherwood Park

#116, 150 Chippewa Rd ,
Edmonton, Alberta,

Phone: 780-984-9399

Fax:

steveleddy@hotmail.com

The property information on this website is derived from the Canadian Real Estate Association's Data Distribution Facility (DDF®). DDF® references real estate listings held by various brokerage firms and franchisees. The accuracy of information is not guaranteed and should be independently verified. The trademarks REALTOR®, REALTORS® and the REALTOR® logo are controlled by The Canadian Real Estate Association (CREA) and identify real estate professionals who are members of CREA. The trademarks MLS®, Multiple Listing Service® and the associated logos are owned by CREA and identify the quality of services provided by real estate professionals who are members of CREA.