

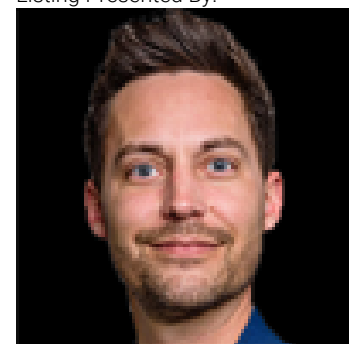


## 28-51228 RGE RD 264 Rural Parkland County AB

\$575,000

Awesome! Cedar Log home in Pine Valley. This 1583 sqft Bungalow is nestled amongst the evergreens to give you the privacy and gives you a sense of being in Jasper or Banff. This well-maintained home has a great open floor plan with loads of space, Vaulted Ceiling, and a beautiful Stone Fireplace as the center piece in the living room. The kitchen has a fantastic warmth about it with lots of cabinets and counter space. Down the hall you have one massive 5 pc bath that can be split into 2 so you can have a dedicated ensuite. Both bedrooms upstairs are huge and have great closet space. Downstairs is partially finished with 2 more bedrooms, Rec Room, Den that can also be turned into a bath, storage room, utility room with newer furnaces, access to the 2 car htd garage with loads of space. Outside is 3 acres of a park like setting, with rolling land, a flat area for parking, playing with the kids on the grass, fire pit area, walk through the trails or take a 5 min walk to the Clifford Lee Bird Sanctuary.

Listing Presented By:



Originally Listed by:  
RE/MAX Excellence

john@johnconnor.ca  
<http://www.JohnConnor.ca>

**RE/MAX ELITE**

**RE/MAX Elite Sherwood Park**

#116, 150 Chippewa Rd ,  
Edmonton, Alberta,

Phone: 780-984-9399  
Fax:  
steveleddy@hotmail.com