



Edmonton Alberta

\$5,250,000

This iconic Crestwood home boasts a stunning panoramic view of our river valley and downtown. Architecturally designed, built in 2001 with an extensive million dollar remodeling completed in 2011 for a contemporary masterpiece. Featuring 5 bdrms, 7 baths, 2 fireplaces, 10 ft ceilings, theatre room, in floor heating, nanny suite & walk out basement. The location is incredible, perched right on the river valley in a quiet, prestigious crescent. Beautifully landscaped by architect Doug Carlyle includes a waterfall feature greeting visitors. Flooded with natural light, the home feels welcoming, not pretentious. Every room is perfectly sized and enjoys lovely sight lines to take advantage of the view and the privacy. Entertaining sized dining room and dream kitchen by Heart Kitchens. Unbelievable dressing room off the primary bedroom must be seen! Excellent schools, great restaurants, coffee shops, grocery all within an easy walk. Lot is approx. 75 X 193. Truly one of Edmonton's finest residences. (id:6769)

Bedroom 5 4.78 m X 3.82 m

Media 6.04 m X 5.28 m

Bedroom 6 5.83 m X 4.06 m

Recreation room 14.68 m X 4.75 m

Living room 7.52 m X 5.43 m

Dining room 5.48 m X 4.58 m

Kitchen 7.55 m X 4.27 m

Den 5.57 m X 3.96 m

Office 5.04 m X 4.29 m

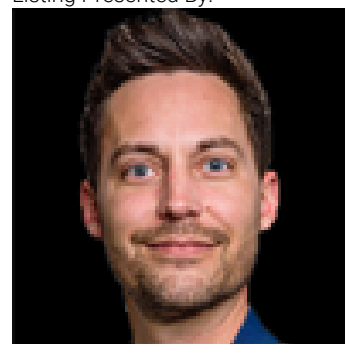
Primary Bedroom 7.94 m X 6.9 m

Bedroom 2 4.26 m X 3.88 m

Bedroom 3 4.38 m X 4.25 m

Bedroom 4 5.01 m X 3.99 m

Listing Presented By:



Originally Listed by:
RE/MAX Excellence



RE/MAX Elite Sherwood Park

#116, 150 Chippewa Rd ,
Edmonton, Alberta,

Phone: 780-984-9399

Fax:

steveleddy@hotmail.com

The property information on this website is derived from the Canadian Real Estate Association's Data Distribution Facility (DDF®). DDF® references real estate listings held by various brokerage firms and franchisees. The accuracy of information is not guaranteed and should be independently verified. The trademarks REALTOR®, REALTORS® and the REALTOR® logo are controlled by The Canadian Real Estate Association (CREA) and identify real estate professionals who are members of CREA. The trademarks MLS®, Multiple Listing Service® and the associated logos are owned by CREA and identify the quality of services provided by real estate professionals who are members of CREA.