



## Edmonton Alberta

\$429,000

Welcome to this Beautiful duplex with finished basement with city permit ,located in the heart of laurel, great deal for first time home buyers or investors,This 1431 sq ft duplex . Main floor has open concept kitchen with access to the large living room and dining room. 2 piece bath completes this level. Upstairs you'll see master bedroom with ensuite and 2 other bedrooms and a full bathroom and Bonus room. The basement consist of large entertainment area with full 4 psc Bath. The property is fully landscaped and fenced with a deck . Close to schools, parks & shopping, Meadows rec center. This property won't be in the market to long. (id:6769)

Living room Measurements not available

Dining room Measurements not available

Kitchen Measurements not available

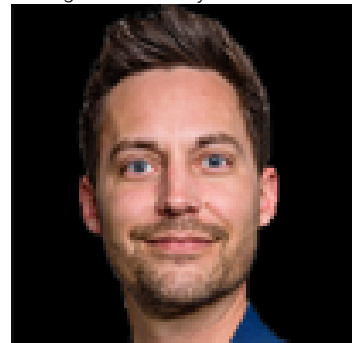
Primary Bedroom Measurements not available

Bedroom 2 Measurements not available

Bedroom 3 Measurements not available

Bonus Room Measurements not available

Listing Presented By:



Originally Listed by:  
Logic Realty

**RE/MAX ELITE**

**RE/MAX Elite Sherwood Park**

#116, 150 Chippewa Rd ,  
Edmonton, Alberta,

Phone: 780-984-9399

Fax:

steveleddy@hotmail.com