



Edmonton Alberta

\$514,896

This beautifully designed home combines modern elegance with functionality. The rear kitchen layout offers a spacious, open flow perfect for entertaining, featuring a silgranite sink and a striking gold kitchen faucet. The home's open floor plan connects the kitchen seamlessly to the dining and living areas. Upstairs, the bonus room provides versatile space for a home office, playroom, or media center. The upstairs laundry adds convenience to daily living. A side entrance provides the potential for a future suite or rental opportunity. The living room's tiled fireplace adds warmth and style, while designer finishes throughout enhance the home's appeal. This property is the perfect blend of comfort, design, and future potential. Don't miss out on this exceptional opportunity! (id:6769)

Living room 16 m x Measurements not available

Dining room 12'9 x 12'9

Kitchen 11'8 x 13'4

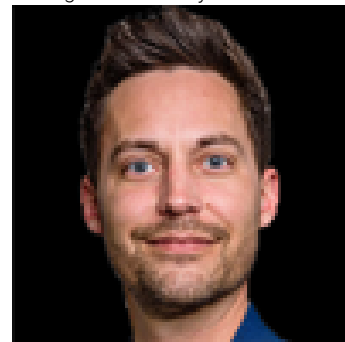
Primary Bedroom 13'4 x 13'6

Bedroom 2 11 m X 10 m

Bedroom 3 11 m X 10 m

Bonus Room 12 m x Measurements not available

Listing Presented By:



Originally Listed by:
Greater Property Group

<https://www.firstlineyeg.com/>

RE/MAX ELITE

RE/MAX Elite Sherwood Park

#116, 150 Chippewa Rd ,
Edmonton, Alberta,

Phone: 780-984-9399

Fax:

steveleddy@hotmail.com