

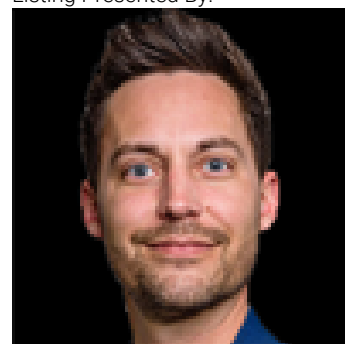


27420 TWP RD 540 3 Rural Parkland County AB

\$839,000

Welcome to Grandmuir Estates! The gorgeous acreage is looking for a family to call it home. Custom built, this one is loaded with extra special touches! The kitchen boasts tons of natural light, custom cabinetry with soft close drawers, spice cabinet and huge pantry. Granite counters, newer appliances including a new dishwasher & updated gas stove. Living area is open concept. Luxury vinyl plank and ceramic tile throughout the home. 3 Bedrooms up including the primary with ensuite and walk in closet. Downstairs you'll find a rec/room with a bedroom, gym, full bath & wet bar. The garage is an oversized, insulated double with a workshop on one side which would be easy to convert to a triple with a door. Outside we have a huge east facing deck to have a morning coffee on & firepit area with large shed for your tools. Large garden area, fruit trees and raspberries. Yard is gated, fully fenced and landscaped. Steps to Muir Lake and all the walking trails. A must see!

Listing Presented By:



Originally Listed by:
RE/MAX PREFERRED CHOICE

tatwell@remax.net

RE/MAX ELITE

RE/MAX Elite Sherwood Park

#116, 150 Chippewa Rd ,
Edmonton, Alberta,

Phone: 780-984-9399

Fax:

steveleddy@hotmail.com