



Leduc Alberta

\$419,900

This 1315 Sq.Ft. four-bedroom bi-level home features an open floor plan with vaulted ceilings, hardwood flooring, and an attached two-car garage. The main kitchen includes stainless steel appliances, a central island, quartz countertops, a walk-in pantry, and a tile backsplash. A family room with a gas fireplace finishes the main floor, which also contains one bedroom and a four-piece bathroom. The upper level consists of the primary bedroom with a walk-in closet and a four-piece ensuite. California shutters are installed throughout the main and upper levels. The fully finished basement features 8.5-foot ceilings, large windows, a second family room, two bedrooms, a three-piece bathroom, and a laundry area with an included washer and dryer. Exterior features include a two-tiered deck, a landscaped yard, and a storage shed. Located on a quiet street in Tribute, the property offers proximity to Highway 2A, schools, shopping, parks, and the airport. (id:6769)

Family room 5.32 m X 7.19 m

Bedroom 3 3.16 m X 3.14 m

Bedroom 4 3.1 m X 2.89 m

Other 4.97 m X 3.21 m

Living room 4.56 m X 7.13 m

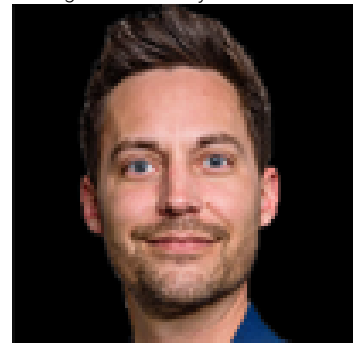
Dining room 3.06 m X 3.35 m

Kitchen 3.06 m X 3.94 m

Bedroom 2 3.65 m X 3.41 m

Primary Bedroom 3.85 m X 4.43 m

Listing Presented By:



Originally Listed by:
RE/MAX Real Estate

<http://www.wesellleduc.com/>

RE/MAX ELITE

RE/MAX Elite Sherwood Park

#116, 150 Chippewa Rd ,
Edmonton, Alberta,

Phone: 780-984-9399

Fax:

steveleddy@hotmail.com

The property information on this website is derived from the Canadian Real Estate Association's Data Distribution Facility (DDF®). DDF® references real estate listings held by various brokerage firms and franchisees. The accuracy of information is not guaranteed and should be independently verified. The trademarks REALTOR®, REALTORS® and the REALTOR® logo are controlled by The Canadian Real Estate Association (CREA) and identify real estate professionals who are members of CREA. The trademarks MLS®, Multiple Listing Service® and the associated logos are owned by CREA and identify the quality of services provided by real estate professionals who are members of CREA.