



Spruce Grove Alberta

\$689,900

Welcome to this beautifully crafted 2389sqft luxury home by Sunny View Homes. The main floor features an office, 2 piece powder room. A walk through pantry leads to the chef's kitchen featuring ceiling height, 2 toned custom cabinetry, under cabinet lighting, a central island with quartz counter tops, built in garbage organizer and spice racks. The living room boasts an open to below design, a central electric fireplace and a custom feature wall creating a striking focal point. The staircase with step lighting and glass railing takes you to the upper level where you'll find a spacious bonus room. The primary suite includes a spa inspired 5-piece ensuite with a custom shower and a WIC. Two additional generously sized bedrooms share a 4-piece bathroom. Oversized double attached garage and large driveway. SEPERATE SIDE entrance to the basement. Customized high quality finishes w/ premium lighting throughout. 3 gas lines, upgraded flooring, coffered ceiling, features walls and MDF shelving. A must see! (id:6769)

Living room 4.63 m X 4.69 m

Dining room 4.12 m X 3.7 m

Kitchen 4.15 m X 3.48 m

Den 3.09 m X 3.19 m

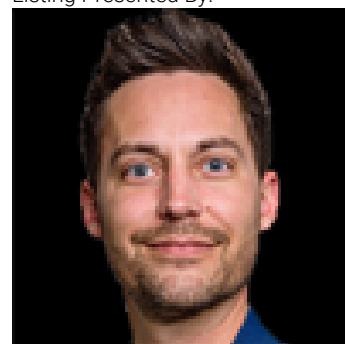
Primary Bedroom 4.53 m X 4.93 m

Bedroom 2 3.39 m X 4.33 m

Bedroom 3 3.42 m X 3.66 m

Loft 4.51 m X 3.87 m

Listing Presented By:



Originally Listed by:
RE/MAX Excellence

<https://mukuloberoi.ca/>

RE/MAX ELITE

RE/MAX Elite Sherwood Park

#116, 150 Chippewa Rd ,
Edmonton, Alberta,

Phone: 780-984-9399

Fax:

steveleddy@hotmail.com

The property information on this website is derived from the Canadian Real Estate Association's Data Distribution Facility (DDF®). DDF® references real estate listings held by various brokerage firms and franchisees. The accuracy of information is not guaranteed and should be independently verified. The trademarks REALTOR®, REALTORS® and the REALTOR® logo are controlled by The Canadian Real Estate Association (CREA) and identify real estate professionals who are members of CREA. The trademarks MLS®, Multiple Listing Service® and the associated logos are owned by CREA and identify the quality of services provided by real estate professionals who are members of CREA.