



Sherwood Park Alberta

\$425,000

No condo fees! This beautifully updated 3-bedroom, 1.5-bath half duplex has been extensively renovated over the past 8 years and is move-in ready. The stunning kitchen is the heart of the home, featuring a 4-person breakfast bar, large pantry, stainless steel appliances, quartz countertops, and gorgeous modern cabinetry. Enjoy vinyl plank flooring, pot lights, updated bathrooms, new doors, and architectural shingles (2018). Upstairs offers 3 spacious bedrooms and a full bath, while the main floor boasts an inviting living room, generous dining area, and convenient 2-piece bath. The partially finished basement provides flexible space for a gym, workshop, playroom, or storage. Outside, you'll find a large backyard, productive apple tree, and oversized storage shed. Nestled on a quiet cul-de-sac in the mature community of Woodbridge Farms, this home is ideally located close to schools, parks, and everyday amenities. (id:6769)

Den 3.36 m X 2.54 m

Laundry room 3.51 m X 2.2 m

Recreation room 7.02 m X 3.35 m

Living room 5.19 m X 3.43 m

Dining room 3.15 m X 2.49 m

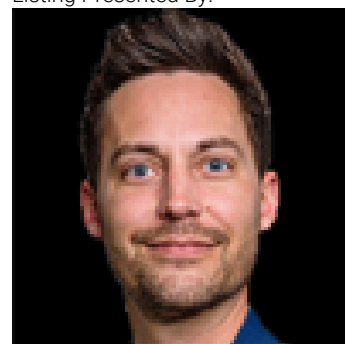
Kitchen 3.65 m X 3.39 m

Primary Bedroom 4.67 m X 3.32 m

Bedroom 2 3.31 m X 2.59 m

Bedroom 3 3.24 m X 2.43 m

Listing Presented By:



Originally Listed by:
REMAX River City

<https://www.macintoshgroup.ca/>

RE/MAX ELITE

RE/MAX Elite Sherwood Park

#116, 150 Chippewa Rd ,
Edmonton, Alberta,

Phone: 780-984-9399

Fax:

steveleddy@hotmail.com

The property information on this website is derived from the Canadian Real Estate Association's Data Distribution Facility (DDF®). DDF® references real estate listings held by various brokerage firms and franchisees. The accuracy of information is not guaranteed and should be independently verified. The trademarks REALTOR®, REALTORS® and the REALTOR® logo are controlled by The Canadian Real Estate Association (CREA) and identify real estate professionals who are members of CREA. The trademarks MLS®, Multiple Listing Service® and the associated logos are owned by CREA and identify the quality of services provided by real estate professionals who are members of CREA.