



Fort Saskatchewan Alberta

\$419,900

Welcome to this beautifully designed 1,476 sq. ft. half duplex located in the welcoming community of Sienna. Built in 2015, this home offers a rare and functional layout featuring two spacious primary suites, each complete with a private 4-piece ensuite and walk-in closet--ideal for couples, guests, or shared living arrangements. The main floor features a bright open-concept design with granite countertops, stainless steel appliances, modern fixtures, and warm earth-tone finishes that create an inviting atmosphere. Large windows provide an abundance of natural light, while the upstairs laundry adds everyday convenience. Outdoor spaces include full-length front veranda and a raised rear deck, perfect for relaxing or entertaining. The property also features a double detached garage along with an additional double parking pad, offering ample parking and storage. Located in Family-friendly Sienna, this home is close to parks, walking trails, schools, and a variety of local amenities. (id:6769)

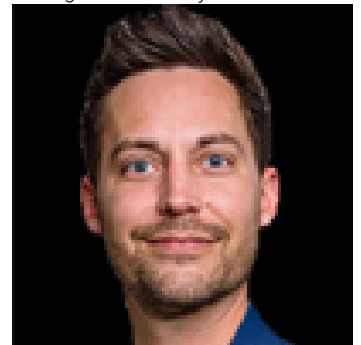
Living room Measurements not available

Kitchen Measurements not available

Primary Bedroom Measurements not available

Bedroom 2 Measurements not available

Listing Presented By:



Originally Listed by:
ComFree

RE/MAX ELITE

RE/MAX Elite Sherwood Park

#116, 150 Chippewa Rd ,
Edmonton, Alberta,

Phone: 780-984-9399

Fax:

steveleddy@hotmail.com

The property information on this website is derived from the Canadian Real Estate Association's Data Distribution Facility (DDF®). DDF® references real estate listings held by various brokerage firms and franchisees. The accuracy of information is not guaranteed and should be independently verified. The trademarks REALTOR®, REALTORS® and the REALTOR® logo are controlled by The Canadian Real Estate Association (CREA) and identify real estate professionals who are members of CREA. The trademarks MLS®, Multiple Listing Service® and the associated logos are owned by CREA and identify the quality of services provided by real estate professionals who are members of CREA.