



## Edmonton Alberta

\$299,000

Welcome to Peregrine point, located in the heart of Downtown. Beautiful views, close to all amenities, two underground parking spots and air conditioning! Two large bedrooms and two baths, a great balcony, California closets organizers, fully renovated. This condo is the jewel of Peregrine Point. Going to school? Close to U of A and Grant Mac. Got season tickets to the Oilers? Perfect, Roger's Place is just around the corner, you can walk there on game days! Want to go for a walk in the River Valley or catch a game at Telus field, put on your walking shoes and say goodbye to paying for parking. Beautiful location, beautiful unit, don't miss out on this unit! (id:6769)

Living room 6.48 m X 3.46 m

Dining room 2.65 m X 2.62 m

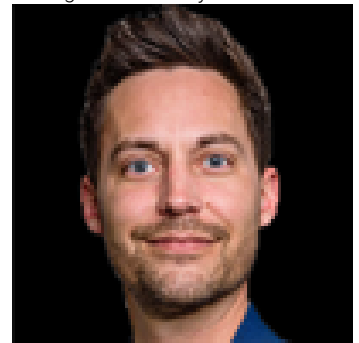
Kitchen 3.46 m X 2.88 m

Primary Bedroom 4.68 m X 3.6 m

Bedroom 2 4.03 m X 3.48 m

Laundry room 2.28 m X 1.65 m

Listing Presented By:



Originally Listed by:  
Homes & Gardens Real Estate  
Limited



**RE/MAX Elite Sherwood Park**

#116, 150 Chippewa Rd ,  
Edmonton, Alberta,

Phone: 780-984-9399

Fax:

steveleddy@hotmail.com

The property information on this website is derived from the Canadian Real Estate Association's Data Distribution Facility (DDF®). DDF® references real estate listings held by various brokerage firms and franchisees. The accuracy of information is not guaranteed and should be independently verified. The trademarks REALTOR®, REALTORS® and the REALTOR® logo are controlled by The Canadian Real Estate Association (CREA) and identify real estate professionals who are members of CREA. The trademarks MLS®, Multiple Listing Service® and the associated logos are owned by CREA and identify the quality of services provided by real estate professionals who are members of CREA.