



Edmonton Alberta

\$299,500

Awesome location on this home, quiet southside location backing a greenspace. Convenient neighbourhood, close to shopping, schools, restaurants and the LRT. Inside there have been many renovations including flooring, HWT, furnace. Large front entry with access to your attached single garage, 2 piece powder room. Few Steps up to your spacious living room with 12+ ft ceilings, brick facing gas fireplace, 2 double garage doors leading out to your 2 tiered deck and completely fenced yard backing a quiet green space. The kitchen has been renovated with newer cabinets, counters, appliances and extra pantry space. There is a large patio door leading out to your upper deck. The top floor has 3 bedroom and a large bathroom. There is a basement with family room, laundry and storage. (id:6769)

Family room 4.22 m X 3.27 m

Living room 4.39 m X 5.55 m

Dining room 4.24 m X 3.1 m

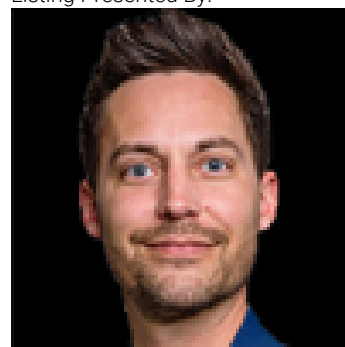
Kitchen 2.46 m X 5.57 m

Primary Bedroom 5.54 m X 3.88 m

Bedroom 2 4.48 m X 2.37 m

Bedroom 3 4.47 m X 2.34 m

Listing Presented By:



Originally Listed by:
RE/MAX Elite



RE/MAX Elite Sherwood Park

#116, 150 Chippewa Rd ,
Edmonton, Alberta,

Phone: 780-984-9399

Fax:

steveleddy@hotmail.com