



Edmonton Alberta

\$199,900

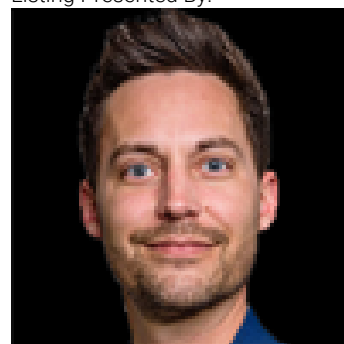
Welcome to this stunning 2 BEDROOM, 2 BATHROOM condo located in the highly desirable community of Laurel—one of Edmonton's most sought-after neighborhoods for families & professionals alike. Situated on the 3rd floor, this bright & modern unit offers an OPEN CONCEPT layout w/tons of natural daylight, creating a warm & welcoming atmosphere. The spacious kitchen features contemporary finishes & is perfect for both everyday living & entertaining. This unit includes 2 PARKINGS stalls—one of them being a secure underground parking spot for added convenience & peace of mind. The primary bedroom comes with an ensuite bathroom for added privacy, while the second bedroom is perfect for guests or kids. Enjoy your own cozy space for HOME OFFICE. Enjoy easy access to everything you need, just minutes from MEADOWS REC CENTRE, public schools, transit, walking trails, & SSIKH TEMPLES. Whether you're a first-time buyer, downsizer, or investor, this home has everything you're looking for in a vibrant & growing community. (id:6769)

Living room 3.36 m x Measurements not available Primary Bedroom 3.21 m x Measurements not

Kitchen 4.51 m x Measurements not available available

Bedroom 2 3.04 m x Measurements not available

Listing Presented By:



Originally Listed by:
Royal LePage Noralta Real Estate



RE/MAX Elite Sherwood Park

#116, 150 Chippewa Rd ,
Edmonton, Alberta,

Phone: 780-984-9399

Fax:

steveleddy@hotmail.com