



Edmonton Alberta

\$239,000

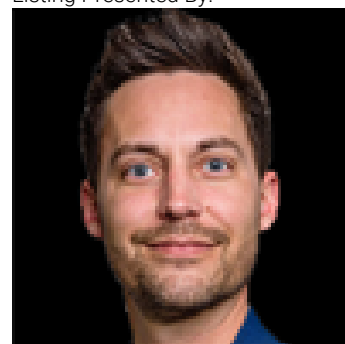
Welcome to the heart of Old Strathcona, just two blocks from vibrant Whyte Ave! This top-floor corner unit offers a rare layout with 3 bedrooms and 1.5 bathrooms--perfect for families, students, or investors alike. The home has been thoughtfully updated with granite countertops, maple cabinetry, stainless steel appliances, and durable laminate flooring throughout. The spacious primary bedroom features a walk-in closet and private ensuite, while the two additional bedrooms are conveniently located near the full 4-piece bathroom and in-suite laundry. Enjoy pleasing proximity to the University of Alberta, the scenic river valley, and several nearby schools--all just minutes away. Whether you're investing or looking for a place to call home, this unit checks all the boxes. Recent upgrades include: new building roof (2023), new boiler unit (2021), pot lights (2024), and bathtub (2020). (id:6769)

Primary Bedroom Measurements not available

Bedroom 3 Measurements not available

Bedroom 2 Measurements not available

Listing Presented By:



Originally Listed by:
MaxWell Challenge Realty

RE/MAX ELITE

RE/MAX Elite Sherwood Park

#116, 150 Chippewa Rd ,
Edmonton, Alberta,

Phone: 780-984-9399

Fax:

steveleddy@hotmail.com

The property information on this website is derived from the Canadian Real Estate Association's Data Distribution Facility (DDF®). DDF® references real estate listings held by various brokerage firms and franchisees. The accuracy of information is not guaranteed and should be independently verified. The trademarks REALTOR®, REALTORS® and the REALTOR® logo are controlled by The Canadian Real Estate Association (CREA) and identify real estate professionals who are members of CREA. The trademarks MLS®, Multiple Listing Service® and the associated logos are owned by CREA and identify the quality of services provided by real estate professionals who are members of CREA.