



## Edmonton Alberta

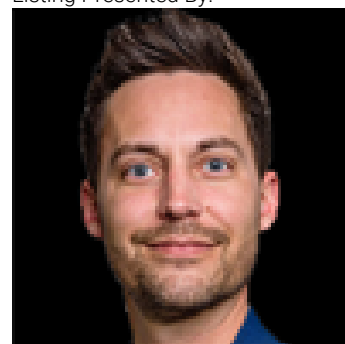
\$222,900

Welcome home to this beautifully maintained 2-bedroom, 2-bathroom condo offering comfort, convenience, and modern appeal. This light-filled residence features an open-concept layout, perfect for both everyday living and entertaining. The spacious living and dining areas flow seamlessly, creating an inviting atmosphere with plenty of natural light. The well-appointed kitchen offers ample cabinetry and counter space, making meal preparation both easy and enjoyable. The generously sized primary suite features a private en-suite bathroom and ample closet space, while the second bedroom is ideal for guests, a home office, or additional living space. A second full bathroom adds convenience and functionality. Enjoy low-maintenance living with thoughtfully designed interiors and a well-kept community setting. This move-in-ready condo is a must-see. (id:6769)

Primary Bedroom Measurements not available

Bedroom 2 Measurements not available

Listing Presented By:



Originally Listed by:  
Exp Realty

**RE/MAX ELITE**

**RE/MAX Elite Sherwood Park**

#116, 150 Chippewa Rd ,  
Edmonton, Alberta,

Phone: 780-984-9399

Fax:

steveleddy@hotmail.com

The property information on this website is derived from the Canadian Real Estate Association's Data Distribution Facility (DDF®). DDF® references real estate listings held by various brokerage firms and franchisees. The accuracy of information is not guaranteed and should be independently verified. The trademarks REALTOR®, REALTORS® and the REALTOR® logo are controlled by The Canadian Real Estate Association (CREA) and identify real estate professionals who are members of CREA. The trademarks MLS®, Multiple Listing Service® and the associated logos are owned by CREA and identify the quality of services provided by real estate professionals who are members of CREA.