



Edmonton Alberta

\$525,000

Welcome to this incredible 1720 square foot 2 Story home located in the heart of the Southwest community of Summerside! Park on the driveway or in the Double car garage and make your way inside. The main level has a 2-piece bathroom, laundry room, 2 good size entrance ways, and an open Living Room, Dining room and Kitchen with pantry and all the appliances. Head on upstairs to the large family room, a primary bedroom with room for a king bed with walk in closet and 3-piece ensuite, 2 more bedrooms and another 4-piece bathroom. Once you are in the basement you find a great rec room, another 3-piece bathroom, a 4th bedroom and the Storage and utility room. Spend your evenings in the back yard on the deck and watch the kids play in the yard or on the play set. Includes all the Amenities Summerside has to offer including lake access. Close to schools, shopping, golfing, and so much more! (id:6769)

Bedroom 4 2.96 m X 5.47 m

Recreation room 4.2 m X 8.05 m

Living room 4.22 m X 4.86 m

Dining room 3.31 m X 3.24 m

Kitchen 3.38 m X 3.71 m

Laundry room 2.89 m X 2.17 m

Pantry 0.99 m X 1.21 m

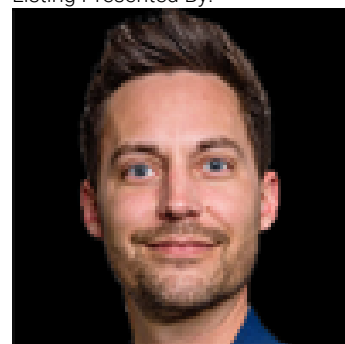
Family room 5.14 m X 4.19 m

Primary Bedroom 3.53 m X 3.78 m

Bedroom 2 2.88 m X 3.91 m

Bedroom 3 3.95 m X 2.74 m

Listing Presented By:



Originally Listed by:
RE/MAX Real Estate

<https://realestateinyeg.ca/>

RE/MAX ELITE

RE/MAX Elite Sherwood Park

#116, 150 Chippewa Rd ,
Edmonton, Alberta,

Phone: 780-984-9399

Fax:

steveleddy@hotmail.com

The property information on this website is derived from the Canadian Real Estate Association's Data Distribution Facility (DDF®). DDF® references real estate listings held by various brokerage firms and franchisees. The accuracy of information is not guaranteed and should be independently verified. The trademarks REALTOR®, REALTORS® and the REALTOR® logo are controlled by The Canadian Real Estate Association (CREA) and identify real estate professionals who are members of CREA. The trademarks MLS®, Multiple Listing Service® and the associated logos are owned by CREA and identify the quality of services provided by real estate professionals who are members of CREA.