

Edmonton Alberta

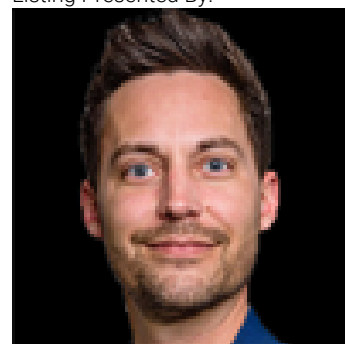
\$219,000

NEXT TO GOLF COURSE! Time to move out of that house to carefree condo living? Condo fees include heat, water & Snow shovelling! Located in highly desirable pet friendly Village Green II with its massive suites, & unmatched golf course views, this corner unit boasts over 1100 square feet with heated Titled parking and titled storage. A quick ride up the elevator & you are at your suite. Step inside to the large foyer leading you down the hall where you enter the living space with bright windows & an open concept kitchen which is open to the huge living area. A cozy fireplace is ideal for cooler nights. Step out onto the huge balcony with room for a BBQ, & plenty of patio furniture so you can relax . The primary suite has plenty of room for a king size bed, with a walk in closet & full 3 pce bath with walk in shower. The 2nd bedroom is just as large with room for an office & bedroom. welcome home. (id:6769)

Primary Bedroom Measurements not available

Bedroom 2 Measurements not available

Listing Presented By:



Originally Listed by:
MaxWell Devonshire Realty

RE/MAX ELITE

RE/MAX Elite Sherwood Park

#116, 150 Chippewa Rd ,
Edmonton, Alberta,

Phone: 780-984-9399

Fax:

steveleddy@hotmail.com

The property information on this website is derived from the Canadian Real Estate Association's Data Distribution Facility (DDF®). DDF® references real estate listings held by various brokerage firms and franchisees. The accuracy of information is not guaranteed and should be independently verified. The trademarks REALTOR®, REALTORS® and the REALTOR® logo are controlled by The Canadian Real Estate Association (CREA) and identify real estate professionals who are members of CREA. The trademarks MLS®, Multiple Listing Service® and the associated logos are owned by CREA and identify the quality of services provided by real estate professionals who are members of CREA.