



Edmonton Alberta

\$179,900

Welcome to this beautiful bungalow-style townhouse in the desirable community of Ermineskin, offering huge living space. This well-designed home features 2 spacious bedrooms, 1.5 bathrooms, an open-concept kitchen, living and dining area, and convenient in-suite laundry. The location is unbeatable—just minutes away from South Common, Century Park LRT, shopping centres, Anthony Henday, and top-rated schools. This well-managed complex has very low condo fees, making it a smart and affordable choice. (id:6769)

Living room 4.15 m X 4.82 m

Dining room 3.25 m X 1.97 m

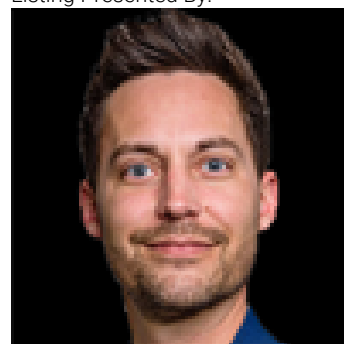
Kitchen 2.87 m X 2.44 m

Primary Bedroom 3.23 m X 3.92 m

Bedroom 2 3.14 m X 3.04 m

Storage 2.09 m X 1.97 m

Listing Presented By:



Originally Listed by:
Century 21 Smart Realty

RE/MAX ELITE

RE/MAX Elite Sherwood Park

#116, 150 Chippewa Rd ,
Edmonton, Alberta,

Phone: 780-984-9399

Fax:

steveleddy@hotmail.com

The property information on this website is derived from the Canadian Real Estate Association's Data Distribution Facility (DDF®). DDF® references real estate listings held by various brokerage firms and franchisees. The accuracy of information is not guaranteed and should be independently verified. The trademarks REALTOR®, REALTORS® and the REALTOR® logo are controlled by The Canadian Real Estate Association (CREA) and identify real estate professionals who are members of CREA. The trademarks MLS®, Multiple Listing Service® and the associated logos are owned by CREA and identify the quality of services provided by real estate professionals who are members of CREA.