



Edmonton Alberta

\$210,000

Updated 960 sq ft 2-bed, 2-bath condo with TWO TITLED PARKING STALLS in a quiet complex in Pembina. Functional layout with bedrooms on opposite sides--great for privacy. The large primary has a walk-in closet and 4-piece ensuite. Second bedroom sits next to a 3-piece bath, perfect for guests or roommates. Updates over the years include: Carpets replaced and fully painted July 2025. Vinyl plank flooring, tile in both bathrooms, fridge (2023), and microwave hood fan (2025). A/C and furnace serviced in 2024. The open kitchen, spacious dining area, and cozy living room lead to a west-facing balcony--perfect for sunset views. In-suite laundry, central A/C, and titled underground parking + storage cage and titled outdoor stall. Prime location near transit, shopping, restaurants, and major roadways. Comfort, convenience, and value all in one! (id:6769)

Living room 4.5 m X 6.81 m

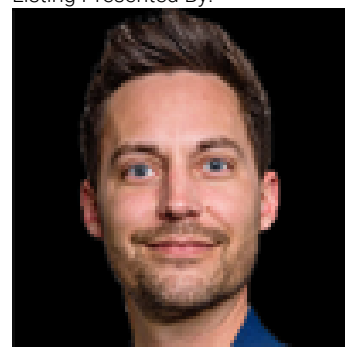
Dining room 3.03 m X 1.63 m

Kitchen 2.8 m X 2.81 m

Primary Bedroom 3.34 m X 6.5 m

Bedroom 2 3.01 m X 3.7 m

Listing Presented By:



Originally Listed by:
Sable Realty

RE/MAX ELITE

RE/MAX Elite Sherwood Park

#116, 150 Chippewa Rd ,
Edmonton, Alberta,

Phone: 780-984-9399

Fax:

steveleddy@hotmail.com

The property information on this website is derived from the Canadian Real Estate Association's Data Distribution Facility (DDF®). DDF® references real estate listings held by various brokerage firms and franchisees. The accuracy of information is not guaranteed and should be independently verified. The trademarks REALTOR®, REALTORS® and the REALTOR® logo are controlled by The Canadian Real Estate Association (CREA) and identify real estate professionals who are members of CREA. The trademarks MLS®, Multiple Listing Service® and the associated logos are owned by CREA and identify the quality of services provided by real estate professionals who are members of CREA.