



Rural Lac Ste Anne County Alberta

\$592,900

Welcome to your private lakefront paradise on Lessard Lake! This 1.09 acre retreat features lush landscaping, raised garden beds, multiple outbuildings, and your own private dock. At its heart is a stunning 1,940 sq ft modern 2 storey home with an attached garage. Step into an open concept living space filled with natural light, where a cozy fireplace sets the tone for comfort. The chef's kitchen boasts rich wood cabinetry, stainless steel appliances, and ample counter space, all overlooking the dining and living areas, perfect for hosting family and friends. With four bedrooms, you'll have space for family, guests, a home office, or a creative studio. The primary suite offers plush comfort and abundant light, while the second-floor deck invites you to soak in breathtaking views. Two levels provide the perfect balance of connection and privacy, while the double garage and basement offer generous storage. This is lakeside living at its finest, where every day feels like a getaway. (id:6769)

Living room 4.42 m X 4.1 m

Dining room 4.46 m X 3.49 m

Kitchen 4.46 m X 3.83 m

Sunroom Measurements not available

Primary Bedroom 3.85 m X 4.45 m

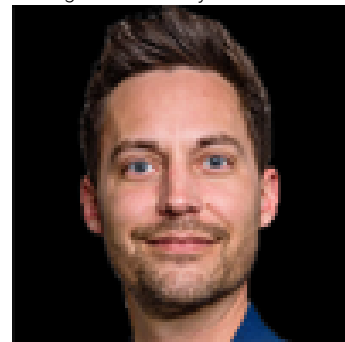
Bedroom 2 4.86 m X 3.44 m

Bedroom 3 4.1 m X 3.05 m

Bedroom 4 4.61 m X 3.16 m

Laundry room 2.36 m X 1.53 m

Listing Presented By:



Originally Listed by:
RE/MAX Real Estate

<https://www.edmontonlakeproperty.com/>

RE/MAX ELITE

RE/MAX Elite Sherwood Park

#116, 150 Chippewa Rd ,
Edmonton, Alberta,

Phone: 780-984-9399

Fax:

steveleddy@hotmail.com

The property information on this website is derived from the Canadian Real Estate Association's Data Distribution Facility (DDF®). DDF® references real estate listings held by various brokerage firms and franchisees. The accuracy of information is not guaranteed and should be independently verified. The trademarks REALTOR®, REALTORS® and the REALTOR® logo are controlled by The Canadian Real Estate Association (CREA) and identify real estate professionals who are members of CREA. The trademarks MLS®, Multiple Listing Service® and the associated logos are owned by CREA and identify the quality of services provided by real estate professionals who are members of CREA.