



Edmonton Alberta

\$159,000

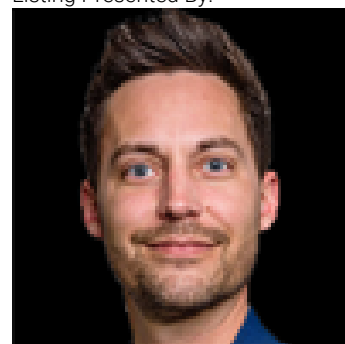
Turnkey suite located in the iconic McLeod Building. Fully furnished and move-in ready. Impeccably maintained. Ideal for any landlord, student or young professional looking to avoid thousands in extra start-up costs. Features include 11ft ceilings, hardwood and tile flooring. Oversized north-facing windows overlook an interior courtyard, which means lots of natural light but more peace and privacy than suites facing Rice Howard Way or 100 St. Power, water and heat are included in condo fees. En suite laundry is a bonus. This building located in the heart of downtown features authentic Chicago-style architecture and rich, turn-of-the-century craftsmanship, including vaulted marble lobby and original wood. Walking distance to: o The Ice District o Restaurants, pubs and nightlife o Canada Place and the Stanley A. Milner Library o The Provincial Museum, Art Gallery, and the Citadel and Winspear theatres o Transit and LRT lines o River valley parks, bike/ walking trails Quick possession available. Act Now (id:6769)

Living room 5.45 m X 4.07 m

Primary Bedroom 2.58 m X 3.44 m

Kitchen 5.45 m X 2.11 m

Listing Presented By:



Originally Listed by:
Royal LePage Noralta Real Estate

<http://www.edmontonhouses.com/>

RE/MAX ELITE

RE/MAX Elite Sherwood Park

#116, 150 Chippewa Rd ,
Edmonton, Alberta,

Phone: 780-984-9399

Fax:

steveleddy@hotmail.com

The property information on this website is derived from the Canadian Real Estate Association's Data Distribution Facility (DDF®). DDF® references real estate listings held by various brokerage firms and franchisees. The accuracy of information is not guaranteed and should be independently verified. The trademarks REALTOR®, REALTORS® and the REALTOR® logo are controlled by The Canadian Real Estate Association (CREA) and identify real estate professionals who are members of CREA. The trademarks MLS®, Multiple Listing Service® and the associated logos are owned by CREA and identify the quality of services provided by real estate professionals who are members of CREA.