

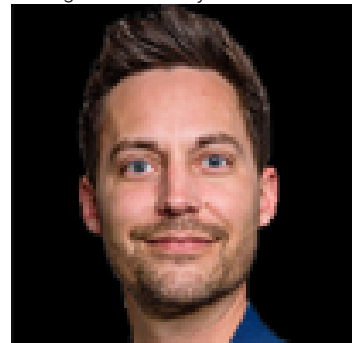


Edmonton Alberta

\$2,000

Spacious and well-maintained 2-storey townhouse located in the family-friendly community of Hairsine. This 3 bed, 2.5 bath home offers a bright and functional layout, including a large living/dining area, a convenient main floor powder room, and a fully finished basement ideal for a rec room, office, or gym. Built in 1978, the home retains classic charm with updated comfort. One designated parking stall included (no garage). Pet-friendly with pet fee (trained pets only). Enjoy nearby parks, schools, Clareview Rec Centre, shopping, and public transit. Easy access to Yellowhead Trail and Anthony Henday. A perfect blend of space, convenience, and location! (id:6769)

Listing Presented By:



Originally Listed by:
Kairali Realty Inc.

<https://www.kairalirealty.ca/>



RE/MAX Elite Sherwood Park

#116, 150 Chippewa Rd ,
Edmonton, Alberta,

Phone: 780-984-9399

Fax:

steveleddy@hotmail.com