

## Edmonton Alberta

\$159,000

First-time buyers, students & investors alert! Welcome to this fully renovated 1-bedroom + den condo—modern, move-in ready, and perfectly positioned in a well-maintained building in a prime central location just minutes to MacEwan University, NAIT, LRT, Rogers Place, and downtown. This stylish unit features laminate flooring throughout, brand-new stylish light fixtures, a cozy wood-burning fireplace, private balcony, and in-suite laundry. The versatile den doubles as a flex space—ideal for a home office, gym, or reading nook. The sleek kitchen shines with stainless steel appliances, quartz countertops, modern cabinetry, and a Silgranit sink, while the fully renovated bathroom offers crisp white tile and new cabinets. The spacious primary bedroom includes French doors and a walk-in closet with ample storage. An energized parking stall and elevator access complete this exceptional city-living package. Don't miss your chance to view this stunning, fully upgraded condo—move-in ready and perfectly located! (id:6769)

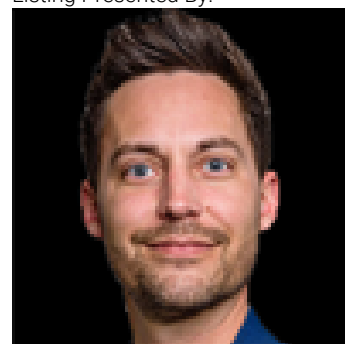
Living room 5.75 m X 5.55 m

Dining room 2.53 m X 2.39 m

Kitchen 2.4 m X 2.66 m

Primary Bedroom 3.13 m X 3.46 m

Listing Presented By:



Originally Listed by:  
Century 21 Smart Realty



**RE/MAX Elite Sherwood Park**

#116, 150 Chippewa Rd ,  
Edmonton, Alberta,

Phone: 780-984-9399

Fax:

steveleddy@hotmail.com

The property information on this website is derived from the Canadian Real Estate Association's Data Distribution Facility (DDF®). DDF® references real estate listings held by various brokerage firms and franchisees. The accuracy of information is not guaranteed and should be independently verified. The trademarks REALTOR®, REALTORS® and the REALTOR® logo are controlled by The Canadian Real Estate Association (CREA) and identify real estate professionals who are members of CREA. The trademarks MLS®, Multiple Listing Service® and the associated logos are owned by CREA and identify the quality of services provided by real estate professionals who are members of CREA.