



## Edmonton Alberta

\$150,000

Welcome to Rutherford Village! This south-facing 1-bedroom, 1-bathroom condo is the perfect opportunity to stop renting and start building equity. Highlights include brand-new laminate flooring, a stylish kitchen with tile backsplash, a spacious open-concept living area, and a generous bedroom featuring a walk-through closet with direct access to the bathroom. It's a comfortable, functional space you can truly call home for years to come. Ideally located just off Ellerslie Road and 111 Street, you're only a two-minute walk from amenities and public transit. Enjoy being just 10 minutes from Century Park LRT, with quick access to Anthony Henday Drive and only minutes from the beautiful Blackmud Creek Ravine. Low condo fees include all utilities -- even electricity! The unit also comes with underground parking, storage, and in-suite laundry for added convenience. (id:6769)

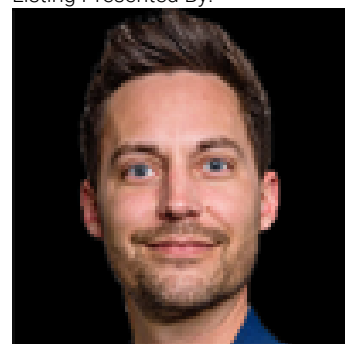
Living room 4.64 m X 3.27 m

Dining room 2.03 m X 3.27 m

Kitchen 2.55 m X 2.67 m

Primary Bedroom 4.34 m X 3.08 m

Listing Presented By:



Originally Listed by:  
Exp Realty

<https://www.muveteam.com/agents/aidan-woodfine/>

**RE/MAX ELITE**

**RE/MAX Elite Sherwood Park**

#116, 150 Chippewa Rd ,  
Edmonton, Alberta,

Phone: 780-984-9399

Fax:

steveleddy@hotmail.com

The property information on this website is derived from the Canadian Real Estate Association's Data Distribution Facility (DDF®). DDF® references real estate listings held by various brokerage firms and franchisees. The accuracy of information is not guaranteed and should be independently verified. The trademarks REALTOR®, REALTORS® and the REALTOR® logo are controlled by The Canadian Real Estate Association (CREA) and identify real estate professionals who are members of CREA. The trademarks MLS®, Multiple Listing Service® and the associated logos are owned by CREA and identify the quality of services provided by real estate professionals who are members of CREA.