



Stony Plain Alberta

\$749,998

Welcome to this stunning double car garage home that blends luxury, functionality, and modern design. The main floor features a spacious bedroom and a full bathroom perfect for guests or extended family. The chef-inspired kitchen is a true showstopper, complete with a unique centre island, extended cabinetry, and a walk-in pantry offering ample storage. The open-concept living area is highlighted by a custom feature wall, seamlessly flowing into the bright dining space -- ideal for entertaining. Upstairs, you'll find a generous bonus room providing flexible living space for your family's needs. The grand primary suite impresses with a stunning feature wall, a luxurious 5-piece ensuite with custom finishes, and a large walk-in closet. Two additional spacious bedrooms each offer their own walk-in closets and share a beautifully appointed main bathroom. Convenient upper-level laundry adds everyday practicality. The unfinished basement presents endless possibilities. (id:6769)

Living room Measurements not available

Dining room Measurements not available

Kitchen Measurements not available

Bedroom 4 Measurements not available

Pantry Measurements not available

Mud room Measurements not available

Primary Bedroom Measurements not available

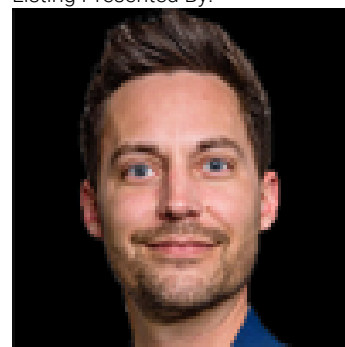
Bedroom 2 Measurements not available

Bedroom 3 Measurements not available

Bonus Room Measurements not available

Laundry room Measurements not available

Listing Presented By:



Originally Listed by:
Exp Realty

RE/MAX ELITE

RE/MAX Elite Sherwood Park

#116, 150 Chippewa Rd ,
Edmonton, Alberta,

Phone: 780-984-9399

Fax:

steveleddy@hotmail.com

The property information on this website is derived from the Canadian Real Estate Association's Data Distribution Facility (DDF®). DDF® references real estate listings held by various brokerage firms and franchisees. The accuracy of information is not guaranteed and should be independently verified. The trademarks REALTOR®, REALTORS® and the REALTOR® logo are controlled by The Canadian Real Estate Association (CREA) and identify real estate professionals who are members of CREA. The trademarks MLS®, Multiple Listing Service® and the associated logos are owned by CREA and identify the quality of services provided by real estate professionals who are members of CREA.