



Edmonton Alberta

\$575,000

Recently built 2023 2 storey half-duplex in the desirable community of MAPLE CREST! This 1519sqft duplex offers 3 bedrooms, 2.5 baths & double fully finished attached garage. The main floor plan is very open & spacious with a featured layout, with light luxury vinyl floors, and a family room with electric fireplace & large windows. The kitchen boasts dark stained maple cabinetry & stainless steel appliances. The dining nook has patio doors to the deck & overlooks the large pie shaped yard. Upstairs are 4 good sized bedrooms, full bath & the master suite features a walk-in closet & full ensuite. The basement has a legal suite for extra income. This home is on a quiet street and backs to a green corridor. Located in a great location, easy walking distance to K-9 school, shopping, bus service, LRT, Superstore shopping & quick access to the Henday or the Whitemud. (id:6769)

Bedroom 4 2.99 m X 4.08 m

Second Kitchen Measurements not available

Living room 3.33 m X 4.42 m

Dining room 2.46 m X 3.09 m

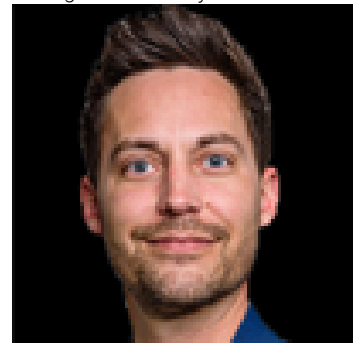
Kitchen 4.53 m X 4.58 m

Primary Bedroom 4.4 m X 6.78 m

Bedroom 2 2.7 m X 4.01 m

Bedroom 3 2.99 m X 3.62 m

Listing Presented By:



Originally Listed by:
Capcity Realty Group

<http://www.capcityrealtygroup.com/>

RE/MAX ELITE

RE/MAX Elite Sherwood Park

#116, 150 Chippewa Rd,
Edmonton, Alberta,

Phone: 780-984-9399

Fax:

steveleddy@hotmail.com

The property information on this website is derived from the Canadian Real Estate Association's Data Distribution Facility (DDF®). DDF® references real estate listings held by various brokerage firms and franchisees. The accuracy of information is not guaranteed and should be independently verified. The trademarks REALTOR®, REALTORS® and the REALTOR® logo are controlled by The Canadian Real Estate Association (CREA) and identify real estate professionals who are members of CREA. The trademarks MLS®, Multiple Listing Service® and the associated logos are owned by CREA and identify the quality of services provided by real estate professionals who are members of CREA.