



Edmonton Alberta

\$469,800

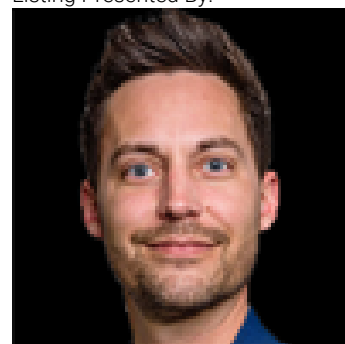
Perfect Family Home in The Orchards! This very clean and well-maintained 2-storey home is move-in ready and located in the desirable community of The Orchards, with in walking distance to school . The bright and spacious living room offers plenty of natural light with room for a dining area and a kitchen table The upper level includes a generous primary bedroom with its own full ensuite, plus two additional bedrooms and a 4-piece main bathroom. The double detached garage offers back-lane access, and the basement is open for future development. Enjoy a private yard and a location close to parks, playgrounds, and public transit. Only minutes to major shopping, with easy access to the Anthony Henday and a short 20-minute drive to Edmonton International Airport. A great opportunity in a fantastic family-friendly neighbourhood. (id:6769)

Primary Bedroom Measurements not available

Bedroom 3 Measurements not available

Bedroom 2 Measurements not available

Listing Presented By:



Originally Listed by:
MaxWell Devonshire Realty



RE/MAX Elite Sherwood Park

#116, 150 Chippewa Rd ,
Edmonton, Alberta,

Phone: 780-984-9399

Fax:

steveleddy@hotmail.com

The property information on this website is derived from the Canadian Real Estate Association's Data Distribution Facility (DDF®). DDF® references real estate listings held by various brokerage firms and franchisees. The accuracy of information is not guaranteed and should be independently verified. The trademarks REALTOR®, REALTORS® and the REALTOR® logo are controlled by The Canadian Real Estate Association (CREA) and identify real estate professionals who are members of CREA. The trademarks MLS®, Multiple Listing Service® and the associated logos are owned by CREA and identify the quality of services provided by real estate professionals who are members of CREA.