



Sherwood Park Alberta

\$294,900

Carefree Living in a Welcoming 55+ Community Enjoy comfortable, low-maintenance living in the most desirable 55+ condo in Sherwood Park. Thoughtfully designed for an active and relaxed lifestyle this well-appointed home offers a practical layout with a bright open kitchen and a family room with a gas fireplace--perfect for those looking to downsize while maintaining comfort and independence. Residents have access to an impressive range of amenities, including a spacious social lounge, fitness room, pool and hot tub, games and hobby areas, library, underground parking and beautifully maintained common spaces that encourage connection and community. Secure entry, elevators, guest accommodations, and visitor parking add to the convenience and peace of mind. Ideally located close to shopping, medical services, transit, and walking paths, this friendly adult community offers the perfect balance of privacy, activity, and simplicity. A wonderful opportunity to enjoy the next chapter in a vibrant 55+ setting. (id:6769)

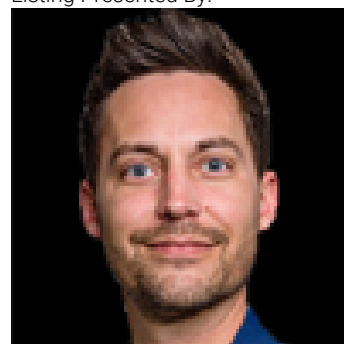
Living room 4.49 m X 5.59 m

Dining room 2.67 m X 2.9 m

Kitchen 3.28 m X 2.57 m

Primary Bedroom 3.86 m X 3.51 m

Listing Presented By:



Originally Listed by:
NOW Real Estate Group

<http://www.byronclark.ca/>



RE/MAX Elite Sherwood Park

#116, 150 Chippewa Rd ,
Edmonton, Alberta,

Phone: 780-984-9399

Fax:

steveleddy@hotmail.com

The property information on this website is derived from the Canadian Real Estate Association's Data Distribution Facility (DDF®). DDF® references real estate listings held by various brokerage firms and franchisees. The accuracy of information is not guaranteed and should be independently verified. The trademarks REALTOR®, REALTORS® and the REALTOR® logo are controlled by The Canadian Real Estate Association (CREA) and identify real estate professionals who are members of CREA. The trademarks MLS®, Multiple Listing Service® and the associated logos are owned by CREA and identify the quality of services provided by real estate professionals who are members of CREA.