



## Edmonton Alberta

\$170,000

Attention investors! This terrific 2 bedroom condo offers outstanding value in the central community of Queen Mary Park. Inside, you'll find a bright open layout with a spacious living area, a functional galley-style kitchen, ample counter space, and a generous dining nook. The in-suite laundry room with new washer and dryer adds everyday convenience along with extra storage. Step outside to the large west-facing balcony, which overlooks the bike path and greenspace. Perfect for soaking up the afternoon and evening sun. With an elevator in the building, low condo fees, and a location just minutes to downtown, transit, NAIT, Grant MacEwan University, Unity Square, and quick access to the U of A, this is smart buying in a great central location. Property is tenant occupied until March of 2027. Property is tenant occupied until March of 2027. (id:6769)

Living room Measurements not available

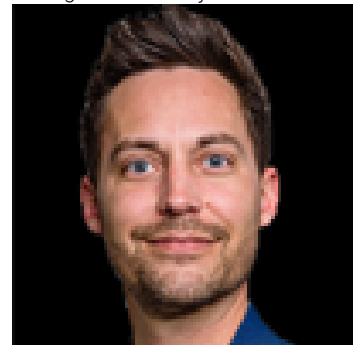
Dining room Measurements not available

Kitchen Measurements not available

Primary Bedroom Measurements not available

Bedroom 2 Measurements not available

Listing Presented By:



Originally Listed by:  
REMAX River City

<http://www.shawntelleinthecity.com/>



**RE/MAX Elite Sherwood Park**

#116, 150 Chippewa Rd ,  
Edmonton, Alberta,

Phone: 780-984-9399

Fax:

steveleddy@hotmail.com

The property information on this website is derived from the Canadian Real Estate Association's Data Distribution Facility (DDF®). DDF® references real estate listings held by various brokerage firms and franchisees. The accuracy of information is not guaranteed and should be independently verified. The trademarks REALTOR®, REALTORS® and the REALTOR® logo are controlled by The Canadian Real Estate Association (CREA) and identify real estate professionals who are members of CREA. The trademarks MLS®, Multiple Listing Service® and the associated logos are owned by CREA and identify the quality of services provided by real estate professionals who are members of CREA.