

Edmonton Alberta

\$1,420,000

Executive luxury living in the prestigious community of Windermere! This stunning 3,520 sq. ft. 2-story estate offers unparalleled elegance and craftsmanship. Boasting 5 spacious bedrooms and 5 bathrooms, this home features soaring ceilings, a gourmet chef's kitchen, and a fully finished walkout basement leading to a beautifully landscaped yard. Complete with a triple attached garage and exclusive Windermere HOA privileges. Strategically located with quick, direct access to the Anthony Henday Highway, making any commute a breeze. Minutes from elite golf courses, top-rated schools, and the Currents of Windermere. (id:6769)

Family room 11.39 * 6.0

Bedroom 5 4.14 * 3.05

Media 5.49 * 3.76

Living room 4.90 * 6.08

Dining room 3.40 * 6.23

Kitchen 5.66 * 5.79

Den 3.75 * 4.17

Pantry 3.80 * 2.46

Primary Bedroom 4.07 * 5.04

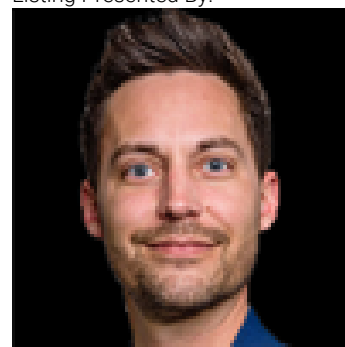
Bedroom 2 4.67 * 3.46

Bedroom 3 3.58 * 4.46

Bedroom 4 3.70 * 3.61

Laundry room 2.62 * 3.44

Listing Presented By:



Originally Listed by:
Century 21 Masters

RE/MAX ELITE

RE/MAX Elite Sherwood Park

#116, 150 Chippewa Rd ,
Edmonton, Alberta,

Phone: 780-984-9399

Fax:

steveleddy@hotmail.com

The property information on this website is derived from the Canadian Real Estate Association's Data Distribution Facility (DDF®). DDF® references real estate listings held by various brokerage firms and franchisees. The accuracy of information is not guaranteed and should be independently verified. The trademarks REALTOR®, REALTORS® and the REALTOR® logo are controlled by The Canadian Real Estate Association (CREA) and identify real estate professionals who are members of CREA. The trademarks MLS®, Multiple Listing Service® and the associated logos are owned by CREA and identify the quality of services provided by real estate professionals who are members of CREA.