

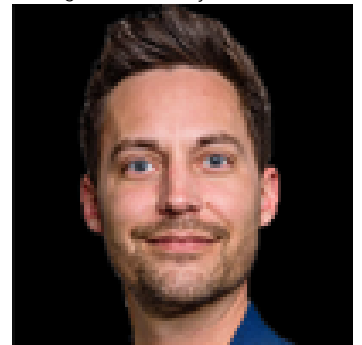


Edmonton Alberta

\$395,000

Prime South Edmonton Location - Modern Turn-Key Restaurant Opportunity! Exceptional opportunity to acquire a well-established and stable restaurant in the heart of South Edmonton's most vibrant commercial hub. This 72-seat establishment features a contemporary interior design and a state-of-the-art kitchen fully equipped with high-end induction tables. The premises offer a functional layout perfectly suited for high-volume service. Benefit from reasonable lease terms and a location primed for continued revenue growth. Truly a turn-key operation with all the modern upgrades already in place. (id:6769)

Listing Presented By:



Originally Listed by:
Royal Lepage Arteam Realty

RE/MAX ELITE

RE/MAX Elite Sherwood Park

#116, 150 Chippewa Rd ,
Edmonton, Alberta,

Phone: 780-984-9399

Fax:

steveleddy@hotmail.com

The property information on this website is derived from the Canadian Real Estate Association's Data Distribution Facility (DDF®). DDF® references real estate listings held by various brokerage firms and franchisees. The accuracy of information is not guaranteed and should be independently verified. The trademarks REALTOR®, REALTORS® and the REALTOR® logo are controlled by The Canadian Real Estate Association (CREA) and identify real estate professionals who are members of CREA. The trademarks MLS®, Multiple Listing Service® and the associated logos are owned by CREA and identify the quality of services provided by real estate professionals who are members of CREA.