



## Sherwood Park Alberta

\$279,900

Welcome Home! Bright West facing TOP FLOOR unit in 10/10 condition! This 2 bedroom, 2 bathroom condo offers 871 square feet of living space with 9 foot ceilings and is flooded with natural light throughout. Open concept layout with a clean, modern kitchen featuring granite countertops, stainless steel appliances, espresso cabinetry and a quartz island. The living and dining area flows nicely to the sunny balcony, perfect for enjoying afternoon and evening sun. Truly a great layout with bedrooms on opposite sides for privacy. The primary bedroom fits a king bed and includes a walkthrough closet to a full ensuite. The second bedroom is a good size and is located right next to the second full bathroom. In-suite laundry with storage, a titled parking stall and a well managed building with low condo fees that include heat and water. Located close to walking trails, shopping, schools and all amenities. Shows immaculate, do not miss this one! (id:6769)

Living room 3.63 m X 2.69 m

Dining room 5.72 m X 1.72 m

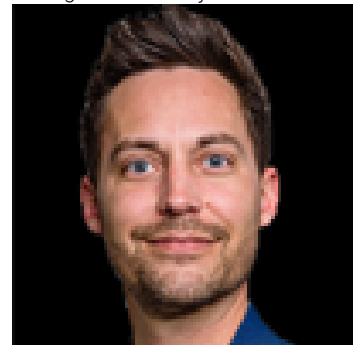
Kitchen 4.78 m X 3.25 m

Primary Bedroom 4.2 m X 3.19 m

Bedroom 2 3.71 m X 3.04 m

Laundry room 2.67 m X 2.64 m

Listing Presented By:



Originally Listed by:  
RE/MAX Elite

**RE/MAX ELITE**

**RE/MAX Elite Sherwood Park**

#116, 150 Chippewa Rd ,  
Edmonton, Alberta,

Phone: 780-984-9399

Fax:

steveleddy@hotmail.com

The property information on this website is derived from the Canadian Real Estate Association's Data Distribution Facility (DDF®). DDF® references real estate listings held by various brokerage firms and franchisees. The accuracy of information is not guaranteed and should be independently verified. The trademarks REALTOR®, REALTORS® and the REALTOR® logo are controlled by The Canadian Real Estate Association (CREA) and identify real estate professionals who are members of CREA. The trademarks MLS®, Multiple Listing Service® and the associated logos are owned by CREA and identify the quality of services provided by real estate professionals who are members of CREA.