



## Edmonton Alberta

\$679,900

Bright, modern, and beautifully upgraded, this move-in ready Cavanagh home features 9-ft ceilings on all levels and a spacious, airy feel. Enjoy views of the playground with walking trails and a peaceful pond just steps away. The main floor includes a dedicated office, a gourmet kitchen with built-in appliances, ceiling-height cabinetry, an oversized island with a wine rack, and a cozy gas fireplace. Custom California Closets built-ins add stylish functionality. Upstairs, the primary suite offers a custom walk-in and a spa-inspired ensuite with a fully tiled shower and upgraded hand-shower. Heated floors in both upper bathrooms and a laundry room with a sink add extra convenience. Outside features a finished concrete patio, BBQ gas line, and a garage with professional floor coating. Additional upgrades include A/C and a full security system with cameras, sensors, and a recording unit. Meticulously maintained and thoughtfully upgraded -- truly a standout home. (id:6769)

Living room 3.98 m X 3.91 m

Dining room 3.61 m X 2.99 m

Kitchen 5.04 m X 3.61 m

Office 2.92 m X 2.92 m

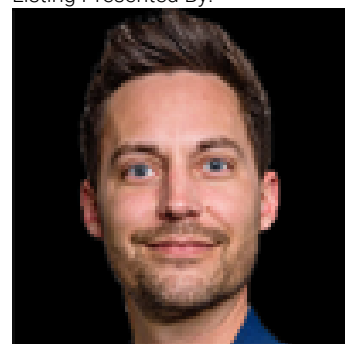
Family room 5.77 m X 5.61 m

Primary Bedroom 5.95 m X 4.82 m

Bedroom 2 3.71 m X 3.3 m

Bedroom 3 3.7 m X 3.3 m

Listing Presented By:



Originally Listed by:  
Mozaic Realty Group



**RE/MAX Elite Sherwood Park**

#116, 150 Chippewa Rd ,  
Edmonton, Alberta,

Phone: 780-984-9399

Fax:

steveleddy@hotmail.com

The property information on this website is derived from the Canadian Real Estate Association's Data Distribution Facility (DDF®). DDF® references real estate listings held by various brokerage firms and franchisees. The accuracy of information is not guaranteed and should be independently verified. The trademarks REALTOR®, REALTORS® and the REALTOR® logo are controlled by The Canadian Real Estate Association (CREA) and identify real estate professionals who are members of CREA. The trademarks MLS®, Multiple Listing Service® and the associated logos are owned by CREA and identify the quality of services provided by real estate professionals who are members of CREA.