

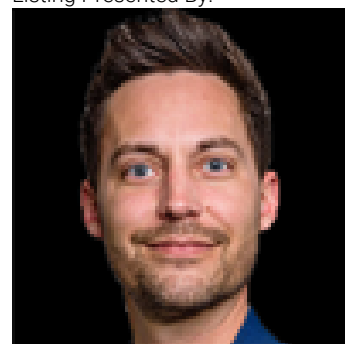


Edmonton Alberta

\$25

Prime 2,000 sq. ft. Commercial Retail Space for Lease - \$5,200/month + GST (includes net rent & operating costs). Located in a high-traffic area with excellent visibility, this versatile unit is ideal for various businesses, including Cannabis Retail Sales, Convenience Stores, Professional & Financial Services, Restaurants, Child Care Services, and Liquor Stores. The space offers great exposure, is surrounded by a thriving community, and features tons of parking in the front and back for you and your clients, making it the perfect spot to grow your business. (id:6769)

Listing Presented By:



Originally Listed by:
Century 21 Smart Realty

<https://century21smart.ca/>



RE/MAX Elite Sherwood Park

#116, 150 Chippewa Rd ,
Edmonton, Alberta,

Phone: 780-984-9399

Fax:

steveleddy@hotmail.com

The property information on this website is derived from the Canadian Real Estate Association's Data Distribution Facility (DDF®). DDF® references real estate listings held by various brokerage firms and franchisees. The accuracy of information is not guaranteed and should be independently verified. The trademarks REALTOR®, REALTORS® and the REALTOR® logo are controlled by The Canadian Real Estate Association (CREA) and identify real estate professionals who are members of CREA. The trademarks MLS®, Multiple Listing Service® and the associated logos are owned by CREA and identify the quality of services provided by real estate professionals who are members of CREA.