



Edmonton Alberta

\$225,000

Discover comfort and convenience in this beautifully maintained 2-bedroom, 2.5-bathroom townhouse located just steps from Millcreek Ravine. Enjoy quick access to scenic trails, public transit, and major routes like the Whitemud & Henday. Offering approximately 1370 sqft of well-designed living space, this home features a sun-filled main floor with an open layout and a cozy gas fireplace. The bedrooms are tucked away on the lower level, providing a cool retreat during summer months. Freshly painted and move-in ready, the home also includes recently upgraded appliances for peace of mind - including dishwasher, stove, microwave, & washer/dryer. The single attached garage includes a convenient 10x10 overhead storage deck, and the private patio comes complete with a natural gas BBQ hookup--perfect for outdoor entertaining. Immediate possession available--start your next chapter in this fantastic location! (id:6769)

Primary Bedroom 3.42 m X 3.56 m

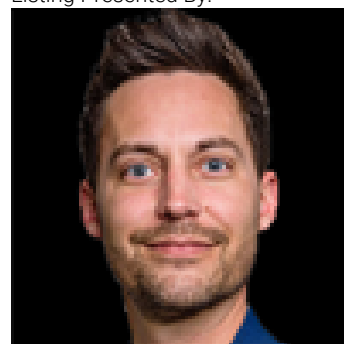
Bedroom 2 2.46 m X 3.39 m

Living room 3.63 m X 3.93 m

Dining room 2.5 m X 3.22 m

Kitchen 6.14 m X 3.35 m

Listing Presented By:



Originally Listed by:
Century 21 Masters

RE/MAX ELITE

RE/MAX Elite Sherwood Park

#116, 150 Chippewa Rd ,
Edmonton, Alberta,

Phone: 780-984-9399

Fax:

steveleddy@hotmail.com