



Edmonton Alberta

\$599,900

Overlooking Edmonton's River Valley and Rundle Park, welcome to year-round views, amenities, and peaceful living. Extensively updated throughout, this south-facing turn-key home features new flooring, paint, trim, doors, windows, lighting, and a redesigned kitchen with custom cabinetry, quartz countertops, and Samsung Bespoke appliances. The spacious main bathroom was completely rebuilt into a spa-inspired retreat with heated tile floors, dual vanities, and a walk-in shower. Upstairs laundry offers added convenience (washer & dryer 2023) and can be easily converted back to a third bedroom. Major upgrades include a furnace, A/C, and hot water tank (2023), an updated electrical panel, water softener, reverse osmosis system, and a professionally installed 14-panel solar system. Enjoy direct access to Edmonton's River Valley trail network, Rundle Park Golf Course, off-leash dog parks, skating, playgrounds, schools, and recreation, all just steps from your front door. Welcome home! (id:6769)

Family room 5.47 m X 5.65 m

Utility room 4.02 m X 7.44 m

Living room 5.91 m X 5.81 m

Dining room 3.59 m X 2.72 m

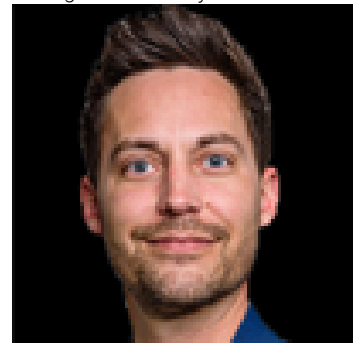
Kitchen 3.59 m X 4.73 m

Primary Bedroom 3.52 m X 4.34 m

Bedroom 2 3.4 m X 2.98 m

Bedroom 3 4.46 m X 2.98 m

Listing Presented By:



Originally Listed by:
Real Broker

RE/MAX ELITE

RE/MAX Elite Sherwood Park

#116, 150 Chippewa Rd ,
Edmonton, Alberta,

Phone: 780-984-9399

Fax:

steveleddy@hotmail.com

The property information on this website is derived from the Canadian Real Estate Association's Data Distribution Facility (DDF®). DDF® references real estate listings held by various brokerage firms and franchisees. The accuracy of information is not guaranteed and should be independently verified. The trademarks REALTOR®, REALTORS® and the REALTOR® logo are controlled by The Canadian Real Estate Association (CREA) and identify real estate professionals who are members of CREA. The trademarks MLS®, Multiple Listing Service® and the associated logos are owned by CREA and identify the quality of services provided by real estate professionals who are members of CREA.