



Edmonton Alberta

\$359,900

Welcome to this well-maintained 3-bedroom, 3-bathroom single-family home in family-friendly Kiniski Gardens. The main floor features a spacious living area, functional kitchen, and a cozy dining space—perfect for everyday living. Upstairs offers newer laminate flooring, a large primary bedroom, two additional bedrooms, and a full 4-piece bathroom. The fully finished basement adds great versatility with a rec room, den, bathroom, and dedicated laundry area. Enjoy the outdoors in the fenced yard with a durable resin shed and a large parking pad with space for multiple vehicles. Located just minutes from Whitemud Drive, this home offers quick access to schools, parks, and shopping. With its thoughtful layout and convenient location, this property is ideal for families, first-time buyers, or anyone looking to settle into a welcoming community. (id:6769)

Living room 3.67 m X 4.38 m

Dining room 3.5 m X 2.5 m

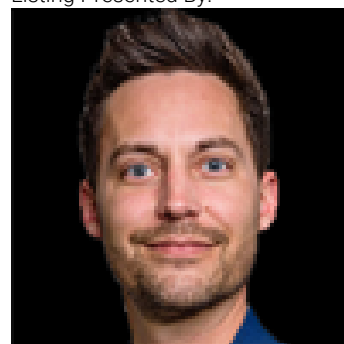
Kitchen 2.49 m X 2.98 m

Primary Bedroom 3.51 m X 3.6 m

Bedroom 2 2.63 m X 3.01 m

Bedroom 3 2.46 m X 3.82 m

Listing Presented By:



Originally Listed by:
MaxWell Devonshire Realty

<https://www.tammymurrayrealestate.ca/>

RE/MAX ELITE

RE/MAX Elite Sherwood Park

#116, 150 Chippewa Rd ,
Edmonton, Alberta,

Phone: 780-984-9399

Fax:

steveleddy@hotmail.com