

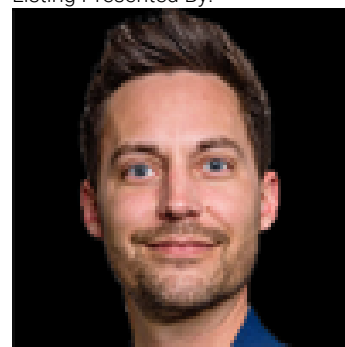


54006 RGE RD 274 36 Rural Parkland County AB

\$735,000

Imagine that mature acreage with a turn key move-in ready interior design that's been tastefully renovated and is ready for your family to call it home. Here it is! Located just minutes north of Spruce Grove all on pavement is 36 Panorama Heights where you'll enjoy this stunning 1400+ sq ft home located on 3+ sprawling acres. The main floor is perfect with an open concept kitchen to living room that's complimented by a gorgeous wood burning fireplace. The main floor is finished with 3 spacious bedrooms and 2 full bathrooms. The walk-out basement features a stunning living room, perfect for entertaining or watching the big game with a full wet-bar set-up. A 4th bedroom, flex space, 3 piece bathroom and tons of storage complete the basement level. This home has been designed with distinction and features high-end finishes throughout including WOLF/matching cabinetry panel appliances, luxury vinyl plank flooring, Liteline smart lighting, Astra fireplaces, basement steam shower and so much more!

Listing Presented By:



Originally Listed by:
RE/MAX PREFERRED CHOICE

travishawryluk@remax.net
<http://www.travishawryluk.com>

RE/MAX ELITE

RE/MAX Elite Sherwood Park

#116, 150 Chippewa Rd ,
Edmonton, Alberta,

Phone: 780-984-9399

Fax:

steveleddy@hotmail.com