



Leduc Alberta

\$399,900

Extensively remodelled bungalow with double detached heated garage in Caledonia Park. Gorgeous great room concept ideal for family or entertaining. 2019 renovations include all new windows, new flooring, paint, new custom cabinets, quartz counter tops, island loaded with drawers, remodeled bathroom & more. New hot water tank in 2020, new garage door opener in 2021, new furnace with AC coil in 2022, new garage shingles in 2025. A lovely floor plan with three bedrooms on the main floor. Lower level fully developed with large family room, fourth bedroom, laundry & large storage area. Front deck for evening tea, a huge back yard for those sizzling summer BBQ's. Firepit area for the marshmallows. 22x26 heated garage & two tarp buildings for extra storage. This home shines with pride of ownership. Must be seen to be appreciated!! (id:6769)

Family room 3.5 m X 8.3 m

Bedroom 4 2.9 m X 3.5 m

Living room 4.1 m X 5.7 m

Dining room 2.8 m X 2.9 m

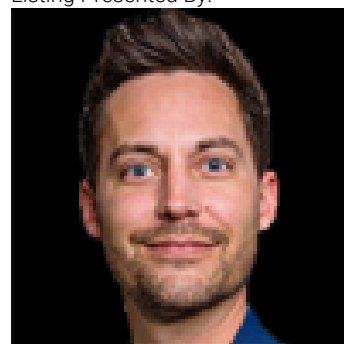
Kitchen 2.7 m X 3.9 m

Primary Bedroom 3.5 m X 3.9 m

Bedroom 2 2.7 m X 2.7 m

Bedroom 3 2.4 m X 3.7 m

Listing Presented By:



Originally Listed by:
Royal LePage Gateway Realty

<https://lesale.ca/>



RE/MAX Elite Sherwood Park

#116, 150 Chippewa Rd ,
Edmonton, Alberta,

Phone: 780-984-9399

Fax:

steveleddy@hotmail.com

The property information on this website is derived from the Canadian Real Estate Association's Data Distribution Facility (DDF®). DDF® references real estate listings held by various brokerage firms and franchisees. The accuracy of information is not guaranteed and should be independently verified. The trademarks REALTOR®, REALTORS® and the REALTOR® logo are controlled by The Canadian Real Estate Association (CREA) and identify real estate professionals who are members of CREA. The trademarks MLS®, Multiple Listing Service® and the associated logos are owned by CREA and identify the quality of services provided by real estate professionals who are members of CREA.