



Edmonton Alberta

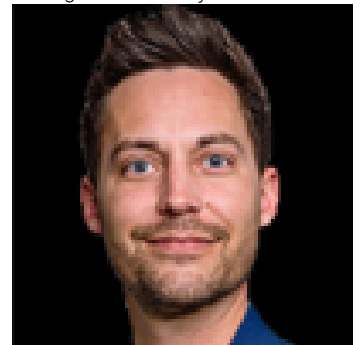
\$499,000

Build-In Progress | New Construction by Renowned Builder An exceptional opportunity to own a brand new single-family home by a renowned builder, currently underconstruction and offering approximately 1,900 sq. ft. of thoughtfully designed living space. Scheduled for completion and possession in December. This home is being constructed in full accordance with the approved development permit, ensuring quality workmanship, compliance with municipal regulations, and attention to detail throughout. The modern design features a functional floor plan with generous living areas, well-sized bedrooms, and contemporary finishes selected for today's lifestyle. Perfect for families looking to secure a new build prior to completion or investors seeking a quality property built by a trusted name. ?? All sizes are approximate. Finishes, plans, and timelines are subject to final construction and approvals. (id:6769)

Living room Measurements not available
Dining room Measurements not available
Kitchen Measurements not available
Family room Measurements not available

Primary Bedroom Measurements not available
Bedroom 2 Measurements not available
Bedroom 3 Measurements not available

Listing Presented By:



Originally Listed by:
Exp Realty

RE/MAX ELITE

RE/MAX Elite Sherwood Park

#116, 150 Chippewa Rd ,
Edmonton, Alberta,

Phone: 780-984-9399

Fax:

steveleddy@hotmail.com

The property information on this website is derived from the Canadian Real Estate Association's Data Distribution Facility (DDF®). DDF® references real estate listings held by various brokerage firms and franchisees. The accuracy of information is not guaranteed and should be independently verified. The trademarks REALTOR®, REALTORS® and the REALTOR® logo are controlled by The Canadian Real Estate Association (CREA) and identify real estate professionals who are members of CREA. The trademarks MLS®, Multiple Listing Service® and the associated logos are owned by CREA and identify the quality of services provided by real estate professionals who are members of CREA.