



Sherwood Park Alberta

\$584,900

Modern design meets the ultimate family location. Be the proud owner of one of the newest homes on the street, featuring a bright open-to-above entry and a layout built to grow with you. The main floor is designed for everyday living, with a spacious living room that flows seamlessly into an island kitchen with granite countertops and a walk-through pantry. The bright dining area sets the perfect scene for family meals. Upstairs offers 3 bedrooms, including a primary suite with a quartz-finished ensuite. The secondary bedrooms feature built-in shelving, while the vaulted bonus room is ideal for movie nights or a home office. The oversized garage adds flexibility for vehicles, storage, and hobbies. Set on a generous lot, the backyard is a blank canvas for your future outdoor plans, paired with ample street parking. A short walk to school makes weekday mornings simpler. Spend weekends exploring nearby ponds and trails. A location and layout that truly gives your family more time together. (id:6769)

Living room Measurements not available

Dining room Measurements not available

Kitchen Measurements not available

Laundry room Measurements not available

Pantry Measurements not available

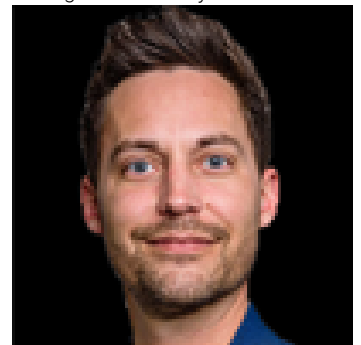
Family room Measurements not available

Primary Bedroom Measurements not available

Bedroom 2 Measurements not available

Bedroom 3 Measurements not available

Listing Presented By:



Originally Listed by:
LPT Realty

<https://ralphtherealtor.ca/>

RE/MAX ELITE

RE/MAX Elite Sherwood Park

#116, 150 Chippewa Rd ,
Edmonton, Alberta,

Phone: 780-984-9399

Fax:

steveleddy@hotmail.com

The property information on this website is derived from the Canadian Real Estate Association's Data Distribution Facility (DDF®). DDF® references real estate listings held by various brokerage firms and franchisees. The accuracy of information is not guaranteed and should be independently verified. The trademarks REALTOR®, REALTORS® and the REALTOR® logo are controlled by The Canadian Real Estate Association (CREA) and identify real estate professionals who are members of CREA. The trademarks MLS®, Multiple Listing Service® and the associated logos are owned by CREA and identify the quality of services provided by real estate professionals who are members of CREA.