



Rural Sturgeon County Alberta

\$3,099,900

DISCOVER YOUR PRIVATE SANCTUARY IN RIVERSTONE POINTE FEATURING 8,800 SQFT OF SPECTACULAR LIVING SPACE this walk-out bungalow offers a rare blend of luxury and tranquility. With stunning river valley views, this custom-built masterpiece boasts captivating curb appeal, custom stone pillars, & a quad garage. Step inside to experience a true sanctuary, barrel roll ceiling, complete with limestone, cork & mahogany floors, coffered ceilings, custom millwork, grand designer staircase & banks of windows. The gourmet kitchen inspired by Clive Christian, featuring Brazilian hardwood, granite countertops, two expansive breakfast bar islands, and a massive pantry. Retreat to the resort-style primary suite, which includes a spa-inspired 6-piece ensuite with double stone showers, a gas fireplace and a lavish walk-in closet. With 5 bedrooms, 7 bathrooms, & 6 fireplaces, library, theatre room, exercise room, radiant heat, 52 ft. balcony & sports court, this home is perfect for both relaxation & entertaining! (id:6769)

Bedroom 3 5.88 m X 4.89 m

Bedroom 4 5.27 m X 6.38 m

Bedroom 5 5.93 m X 2.66 m

Recreation room 8.23 m X 9.06 m

Media 6.9 m X 5.32 m

Living room 5.08 m X 9.2 m

Dining room 5.61 m X 4.53 m

Kitchen 7.93 m X 6.73 m

Family room 8.14 m X 7.69 m

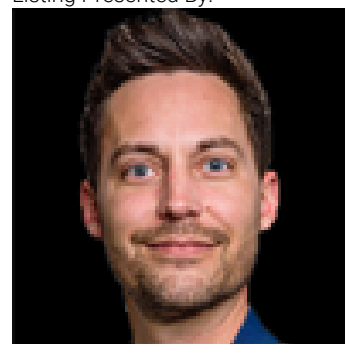
Den 5.02 m X 5.84 m

Primary Bedroom 6.09 m X 7.2 m

Bedroom 2 3.99 m X 4.04 m

Laundry room 2.37 m X 3.4 m

Listing Presented By:



Originally Listed by:
RE/MAX Elite

<http://www.robertsonrealestategroup.ca/>

RE/MAX ELITE

RE/MAX Elite Sherwood Park

#116, 150 Chippewa Rd ,
Edmonton, Alberta,

Phone: 780-984-9399

Fax:

steveleddy@hotmail.com

The property information on this website is derived from the Canadian Real Estate Association's Data Distribution Facility (DDF®). DDF® references real estate listings held by various brokerage firms and franchisees. The accuracy of information is not guaranteed and should be independently verified. The trademarks REALTOR®, REALTORS® and the REALTOR® logo are controlled by The Canadian Real Estate Association (CREA) and identify real estate professionals who are members of CREA. The trademarks MLS®, Multiple Listing Service® and the associated logos are owned by CREA and identify the quality of services provided by real estate professionals who are members of CREA.