



Edmonton Alberta

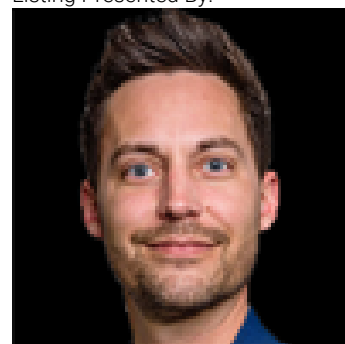
\$399,500

Welcome to this beautiful 3-bedroom, 2.5-bath home located in the highly desirable community of Maple Crest , an opportunity you don't want to miss at this price! Step into the bright and welcoming entrance and enjoy the open-concept layout designed for both comfort and functionality. The kitchen features granite countertops, espresso cabinetry, a modern backsplash, and stainless steel appliances. The main floor also offers a spacious living room with a cozy fireplace, a dedicated dining area, and a convenient half bath. Upstairs, you'll find a full 4-piece bathroom, two well-sized bedrooms, and a large primary bedroom complete with a generous walk-in closet and a 4-piece ensuite. The partially finished basement adds extra living space with a recreation room and bar, perfect for entertaining. Outside, enjoy a professionally built deck and a yard spacious enough for gardening or outdoor relaxation. Situated on a quiet street, this home is close to shopping and offers quick access to Anthony Henday Drive. (id:6769)

Living room Measurements not available
Dining room Measurements not available
Kitchen Measurements not available

Primary Bedroom Measurements not available
Bedroom 2 Measurements not available
Bedroom 3 Measurements not available

Listing Presented By:



Originally Listed by:
Exp Realty

RE/MAX ELITE

RE/MAX Elite Sherwood Park

#116, 150 Chippewa Rd ,
Edmonton, Alberta,

Phone: 780-984-9399

Fax:

steveleddy@hotmail.com

The property information on this website is derived from the Canadian Real Estate Association's Data Distribution Facility (DDF®). DDF® references real estate listings held by various brokerage firms and franchisees. The accuracy of information is not guaranteed and should be independently verified. The trademarks REALTOR®, REALTORS® and the REALTOR® logo are controlled by The Canadian Real Estate Association (CREA) and identify real estate professionals who are members of CREA. The trademarks MLS®, Multiple Listing Service® and the associated logos are owned by CREA and identify the quality of services provided by real estate professionals who are members of CREA.