



Sherwood Park Alberta

\$534,900

GRANDMA IS MOVING OUT OF THE BIG HOUSE! Over 4 decades of love in this home. Located on Manor Drive backing greenspace, on a 680sqm lot, is walking distance to 3 schools, shopping, transit, Golf Course trails, & summer sunset views or winter sledding out your doorstep. 2 Storey with 4 BEDROOMS UP has a HUGE MAIN FLOOR awesome for entertaining, Living Room with large windows, Formal Dining Room & a CUSTOM BUILT Family Room with vaulted ceilings, with sliding doors to the backyard with deck. Kitchen with triple pane window, and a 2pce bath with laundry hidden around the corner, near the stairwell leading to the "WOW, Red Carpet" Basement including a Wet Bar, storage, and a former 5th Bedroom (no-egress window), & sowing room (no photos available). Upstairs the Primary easily fits a King Bed & large dressers, great closet room, & 2 pce en-suite. All the bedrooms are extremely spacious. 4 Car Parking Pad, single Garage has a 10 foot door with drive-thru access to yard. RARE OPPORTUNITY with BIG POSSIBILITIES. (id:6769)

Den 1.95 m X 4.16 m

Recreation room 4.67 m X 8.27 m

Utility room 3.44 m X 3.05 m

Other 1.43 m X 1.77 m

Living room 3.65 m X 6.07 m

Dining room 3.32 m X 3.53 m

Kitchen 3.56 m X 3.8 m

Family room 6.53 m X 4.41 m

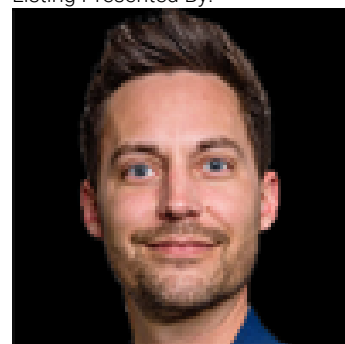
Primary Bedroom 4.26 m X 3.14 m

Bedroom 2 3.09 m X 4.24 m

Bedroom 3 3.17 m X 2.94 m

Bedroom 4 3.09 m X 3.26 m

Listing Presented By:



Originally Listed by:
MaxWell Devonshire Realty

<http://www.coreymcewen.com/>

RE/MAX ELITE

RE/MAX Elite Sherwood Park

#116, 150 Chippewa Rd ,
Edmonton, Alberta,

Phone: 780-984-9399

Fax:

steveleddy@hotmail.com

The property information on this website is derived from the Canadian Real Estate Association's Data Distribution Facility (DDF®). DDF® references real estate listings held by various brokerage firms and franchisees. The accuracy of information is not guaranteed and should be independently verified. The trademarks REALTOR®, REALTORS® and the REALTOR® logo are controlled by The Canadian Real Estate Association (CREA) and identify real estate professionals who are members of CREA. The trademarks MLS®, Multiple Listing Service® and the associated logos are owned by CREA and identify the quality of services provided by real estate professionals who are members of CREA.