



Spruce Grove Alberta

\$749,900

Built by Sunny View Homes- TRIPLE car garage and o/s driveway. This stunning home offers a main floor bedroom and full bathroom perfect for guests or multi generational living. The spacious open to below great room features a custom accent wall with a modern fireplace. The upgraded kitchen boasts ceiling height cabinetry, a walk through pantry and a nook with a built in beverage station. The mudroom offers double coat closets and a built in bench for everyday convenience. A glass railing staircase with maple handrail and step lighting leads to the upper level central bonus room. The primary suite showcases the coffered ceiling and barn door entry to a spa like en-suite with double vanity, freestanding soaker tub, custom glass-enclosed shower, and a walk in closet with MDF shelving. Two additional bedrooms share a 4- piece bathroom. Finished with modern upgrades with quality craftsmanship throughout. SEPERATE side entrance to the bsmt. Close to Amenities. A must see! (id:6769)

Living room 4.6 m X 4.65 m

Dining room 4.76 m X 3.76 m

Kitchen 4.24 m X 3.3 m

Den 3.06 m X 3.24 m

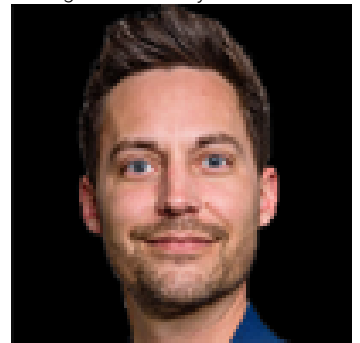
Primary Bedroom 4.55 m X 4.29 m

Bedroom 2 3.31 m X 3.67 m

Bedroom 3 3.31 m X 3.34 m

Bonus Room 5.82 m X 4.97 m

Listing Presented By:



Originally Listed by:
RE/MAX Excellence

<https://mukuloberoi.ca/>



RE/MAX Elite Sherwood Park

#116, 150 Chippewa Rd ,
Edmonton, Alberta,

Phone: 780-984-9399

Fax:

steveleddy@hotmail.com

The property information on this website is derived from the Canadian Real Estate Association's Data Distribution Facility (DDF®). DDF® references real estate listings held by various brokerage firms and franchisees. The accuracy of information is not guaranteed and should be independently verified. The trademarks REALTOR®, REALTORS® and the REALTOR® logo are controlled by The Canadian Real Estate Association (CREA) and identify real estate professionals who are members of CREA. The trademarks MLS®, Multiple Listing Service® and the associated logos are owned by CREA and identify the quality of services provided by real estate professionals who are members of CREA.