



St. Albert Alberta

\$419,900

Like NEW - this immaculate almost 1400sqft home is perfection inside and out. NO CONDO FEES and LAKE ACCESS! The main floor has VINYL plank flooring, a large bright kitchen with QUARTZ countertops, huge ISLAND- perfect for entertaining, bar fridge, and lots of storage. There is a good sized dining area, warm and inviting front living room with FIREPLACE and access to the front deck. Upstairs there are THREE BEDROOMS and a main 4pce bathroom. The primary suite can easily accommodate a king suite and features a 3pce ENSUITE and WALK IN CLOSET. There is a DOUBLE ATTACHED Garage with extra shelving and COLD TAP. CENTRAL AIR CONDITIONING is an added feature for those hot summer days! Steps to schools, the lake, parks and trails. Fantastic location! (id:6769)

Laundry room 1.92 m X 1.7 m

Utility room 2.03 m X 0.98 m

Living room 4.37 m X 6.52 m

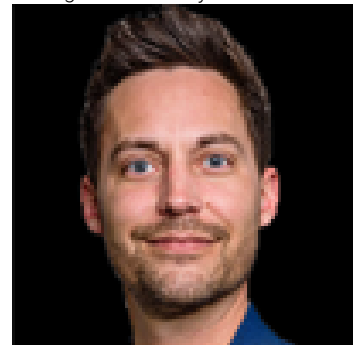
Kitchen 5.33 m X 2.39 m

Primary Bedroom 4.27 m X 3.7 m

Bedroom 2 2.62 m X 3.14 m

Bedroom 3 2.59 m X 2.89 m

Listing Presented By:



Originally Listed by:
RE/MAX Elite

<http://www.erinwillman.com/>

RE/MAX ELITE

RE/MAX Elite Sherwood Park

#116, 150 Chippewa Rd ,
Edmonton, Alberta,

Phone: 780-984-9399

Fax:

steveleddy@hotmail.com

The property information on this website is derived from the Canadian Real Estate Association's Data Distribution Facility (DDF®). DDF® references real estate listings held by various brokerage firms and franchisees. The accuracy of information is not guaranteed and should be independently verified. The trademarks REALTOR®, REALTORS® and the REALTOR® logo are controlled by The Canadian Real Estate Association (CREA) and identify real estate professionals who are members of CREA. The trademarks MLS®, Multiple Listing Service® and the associated logos are owned by CREA and identify the quality of services provided by real estate professionals who are members of CREA.